

Leica SP8 DIC Imaging

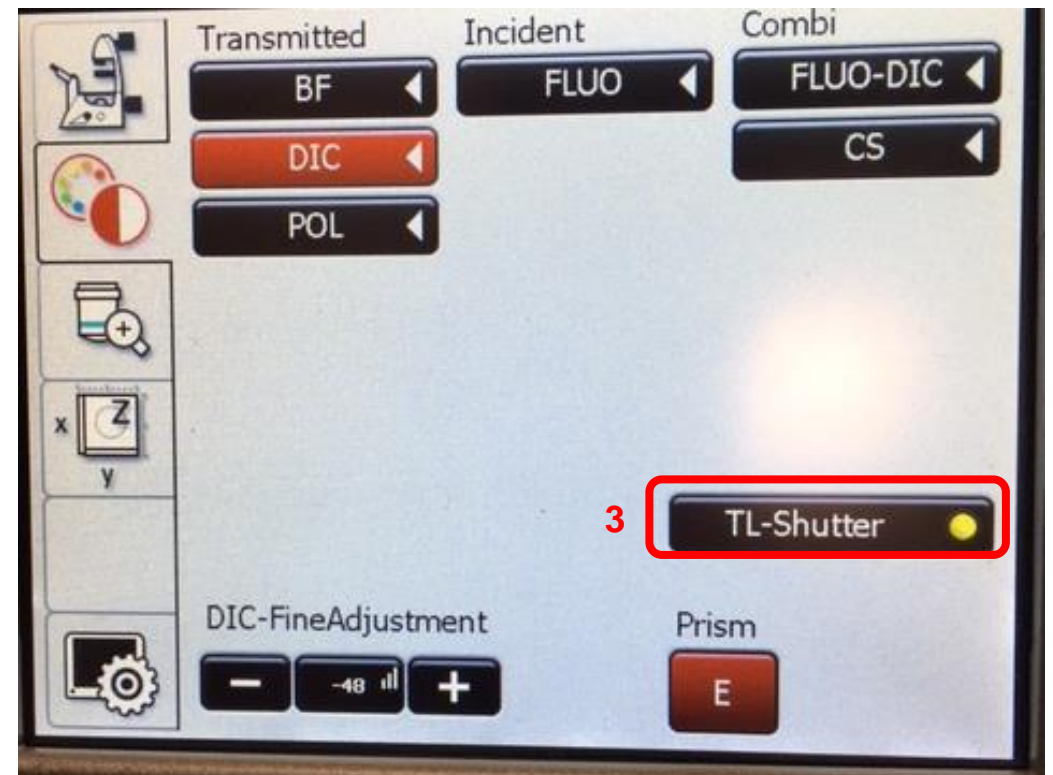
Kim Peifley

02/10/17

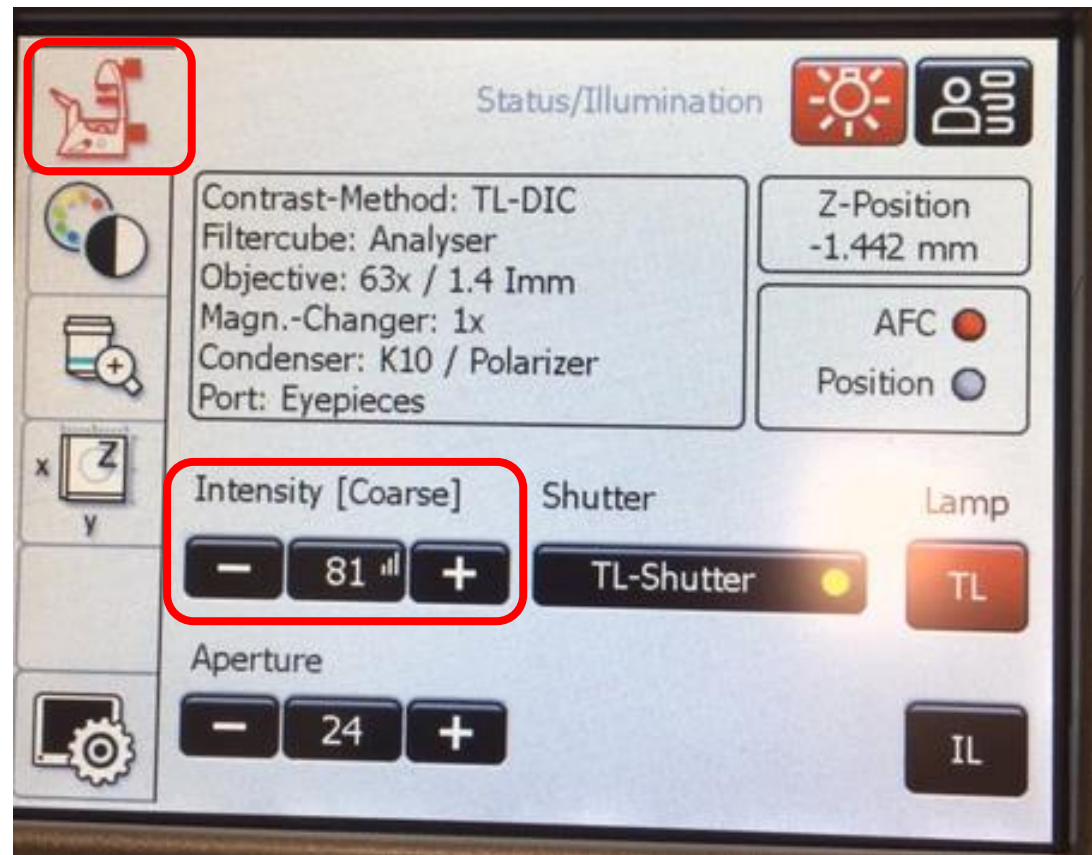
With focus and fluorophore settings already established:

On the microscope touch screen:

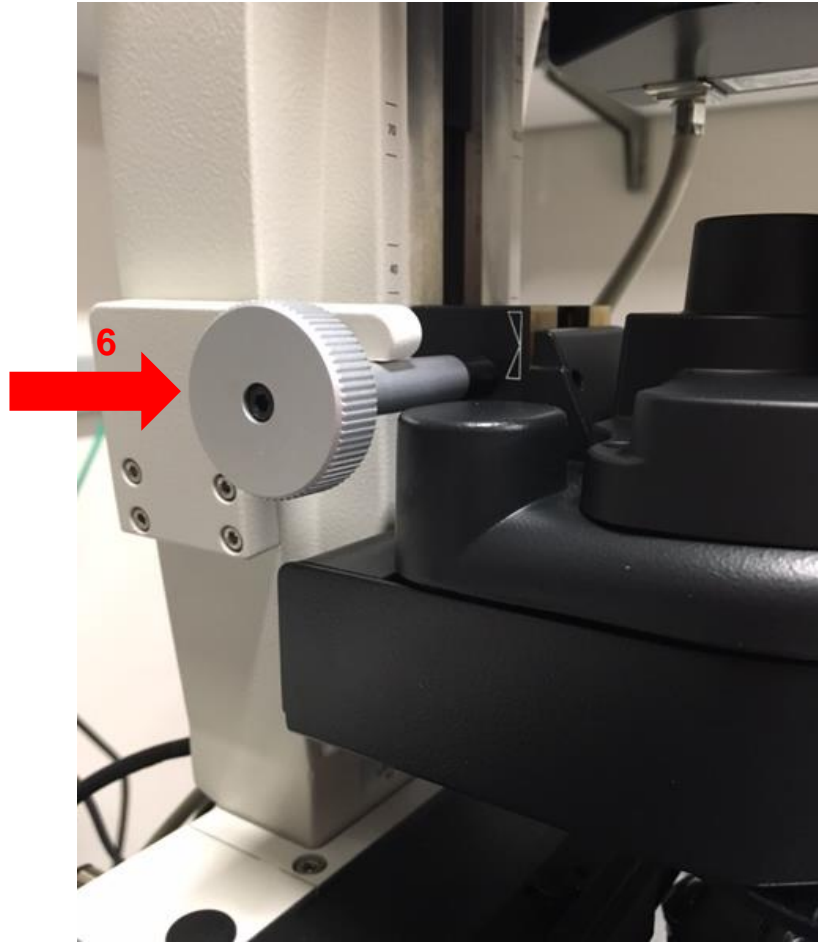
1. Select Color Contrast window.
2. Under Transmitted select DIC.
3. Select TL-Shutter. Gray circle indicates off, yellow circle indicates on.



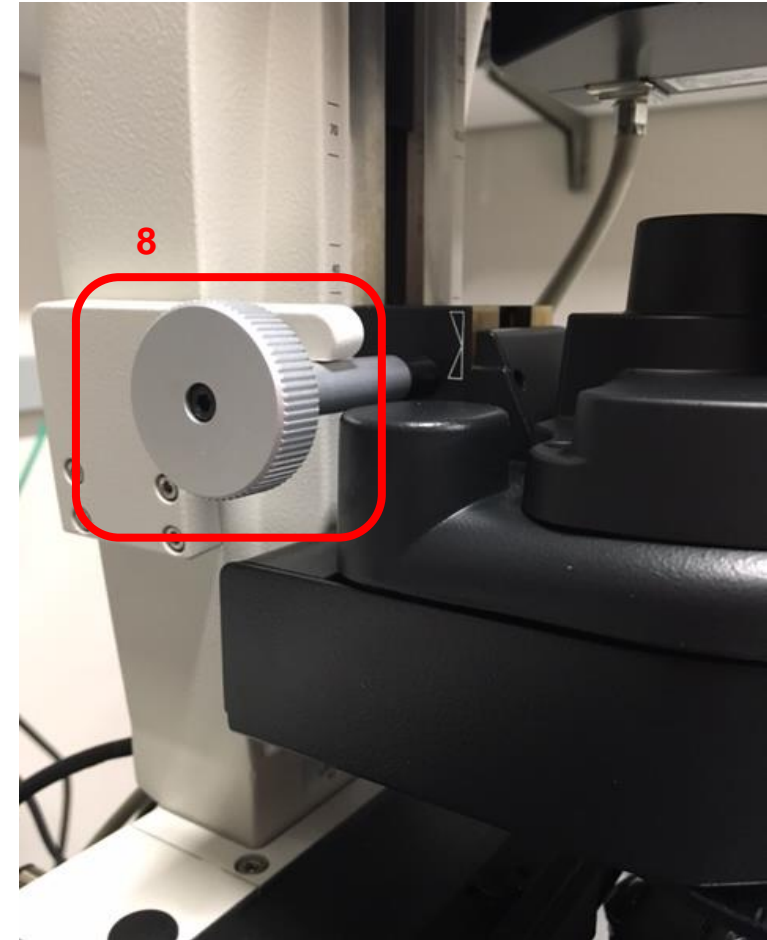
4. If you need to adjust the intensity of the light – select Microscope menu on the touch screen and then adjust Intensity.



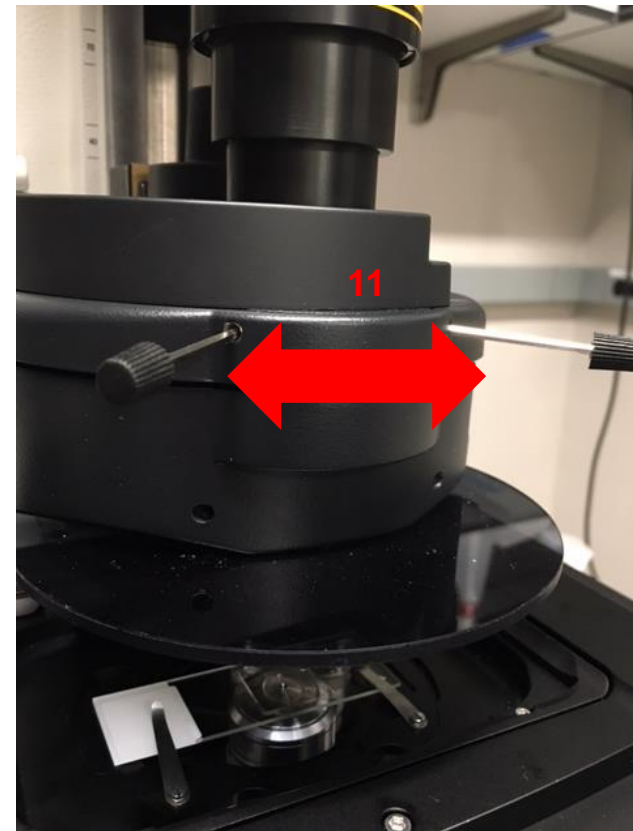
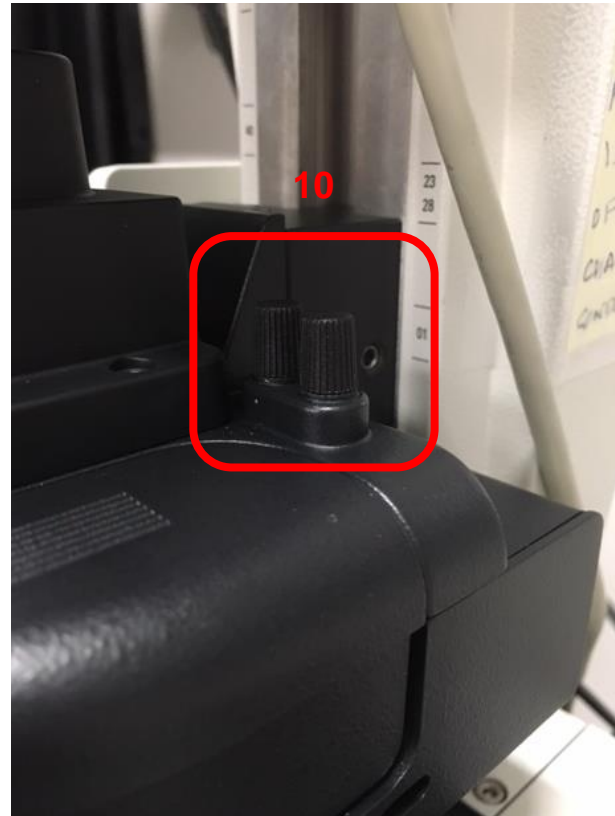
5. Adjust the focus.
6. Adjust the condenser.



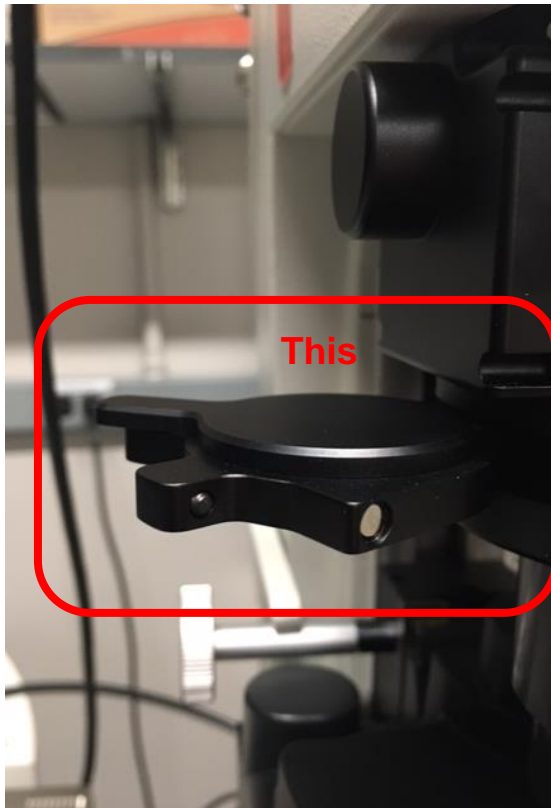
7. Start closing the field diaphragm.
8. Adjust the condenser as you do this.
9. Repeat until you can start to see the octagon shape and it is in focus.



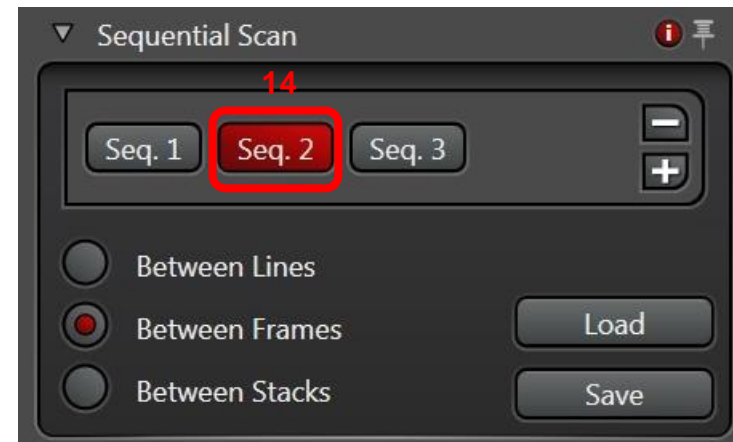
10. Removed the pins from their holder on the back of the condenser near the microscope arm.
11. Put in place and center the field diaphragm.
12. You may need to adjust the condenser [6] and close the field diaphragm [7] more as you move field diaphragm to center.



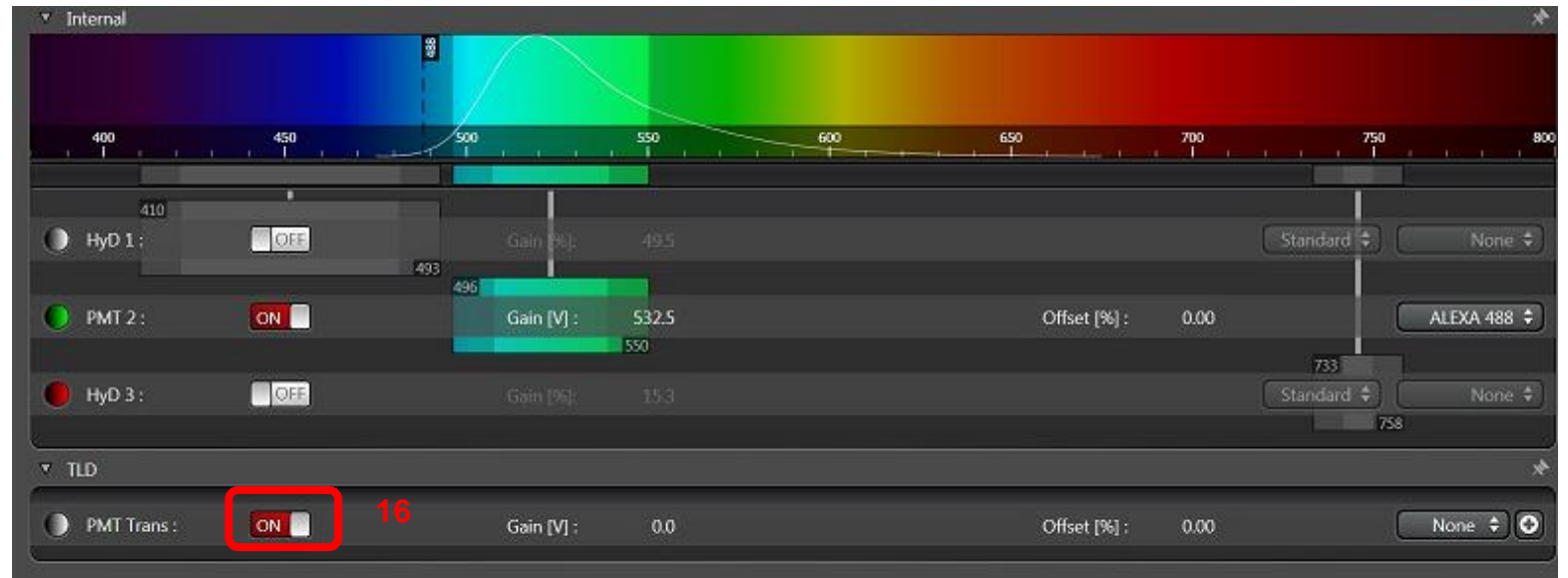
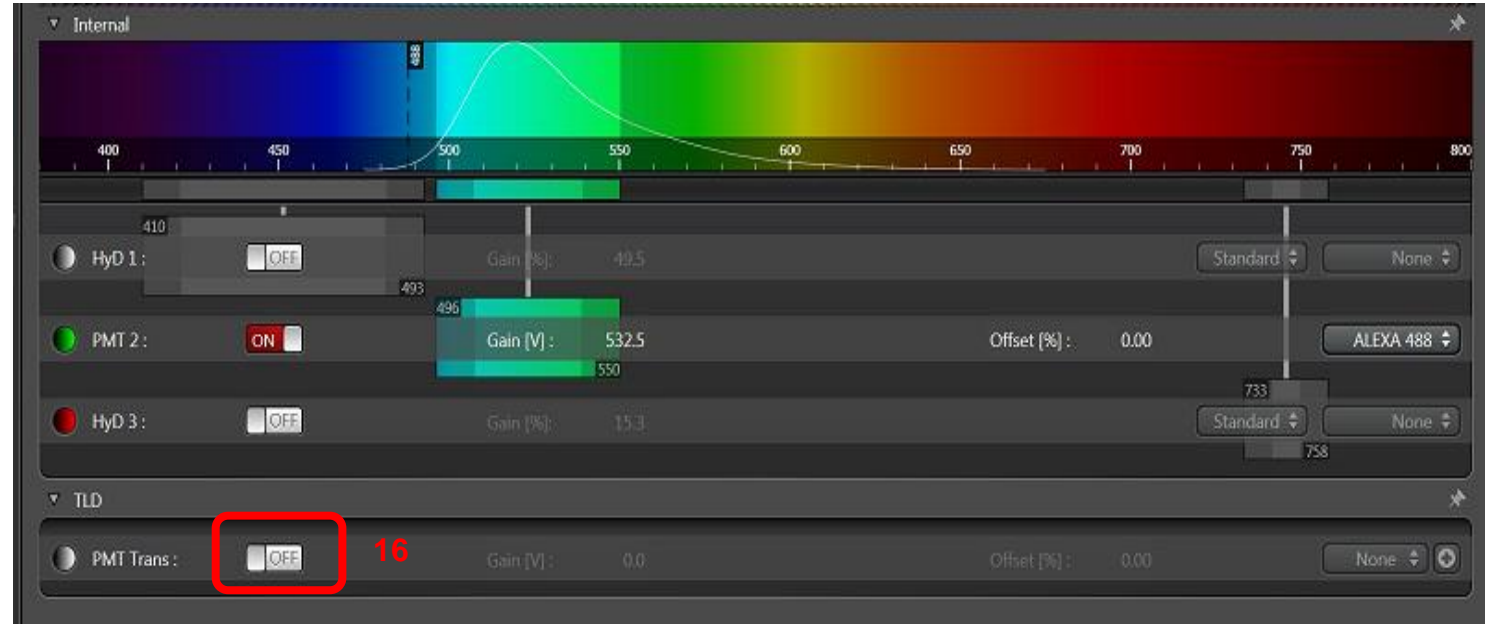
13. Make sure Brightfield/TLD lens is in the “out” position.



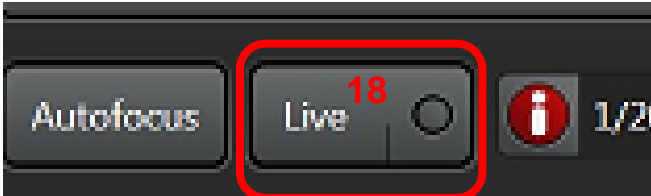
14. Select the sequence you wish to attach DIC.
15. Click the arrow next to TLD to open the transmitted window.



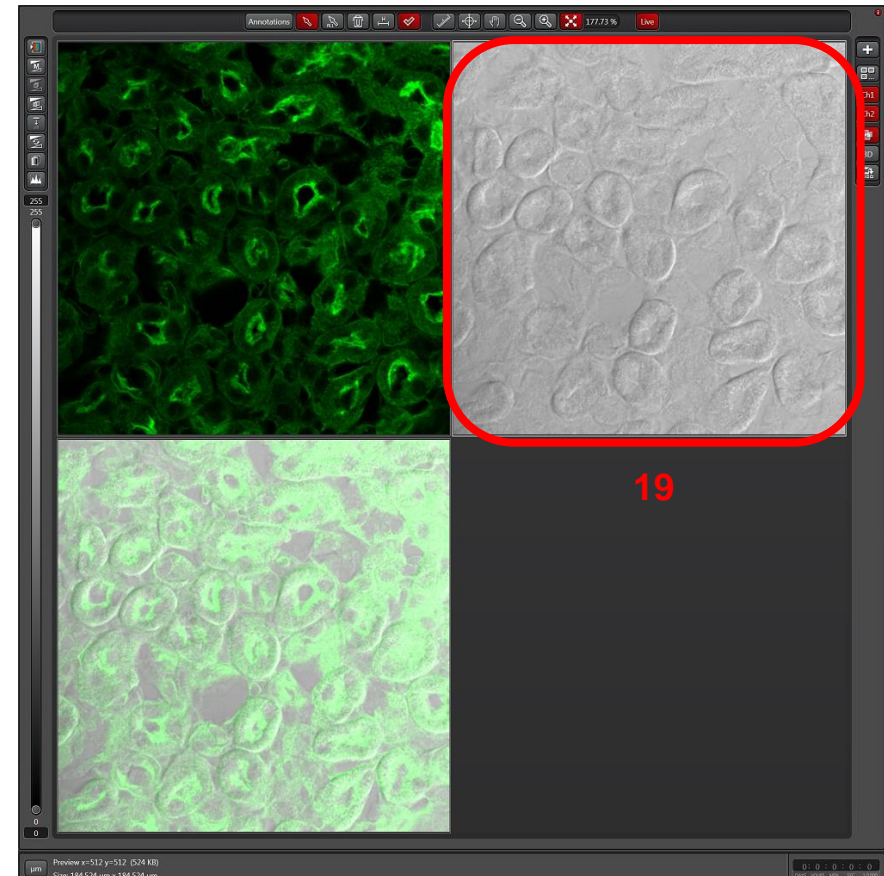
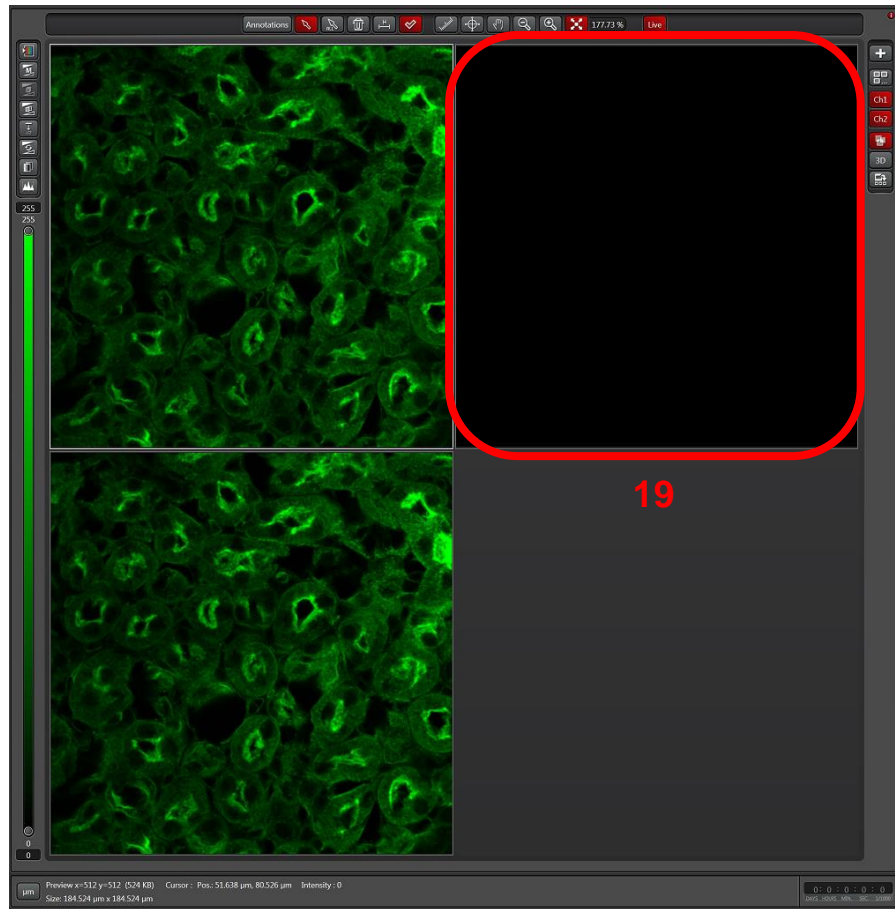
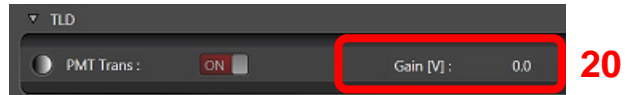
16. Click on the OFF button to turn the transmitted light ON.



- 17. In the Fluo Turret menu select Scan-DIC.
- 18. Click Live to start scanning.



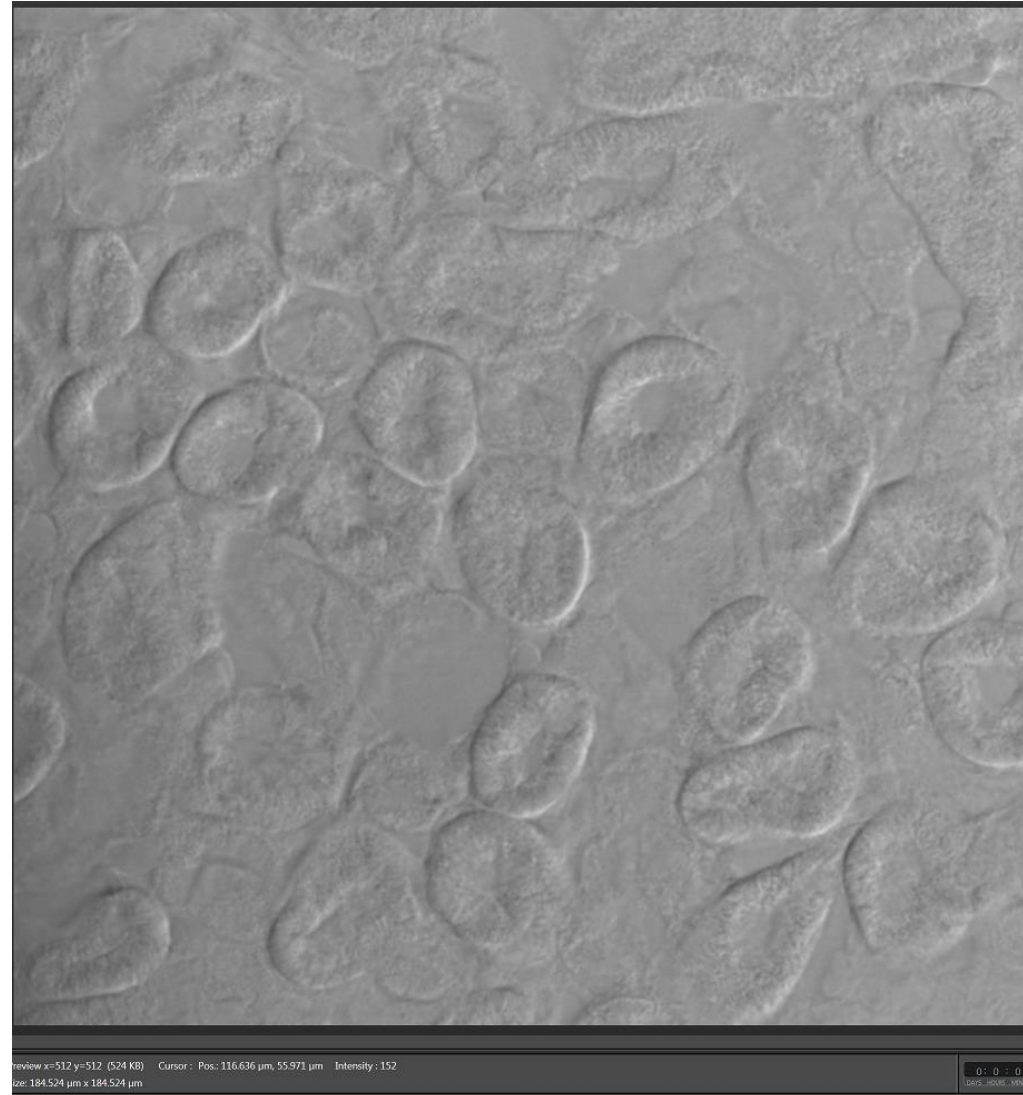
19. Click on the DIC window to select it.
20. Adjust the gain via the control panel or software.



21. Adjust the shear either from the software in the Microscope DIC window [A] or from the dial underneath the objective turret [B].



This is an image after sheer adjustment.



22. Adjust DIC contrast.

