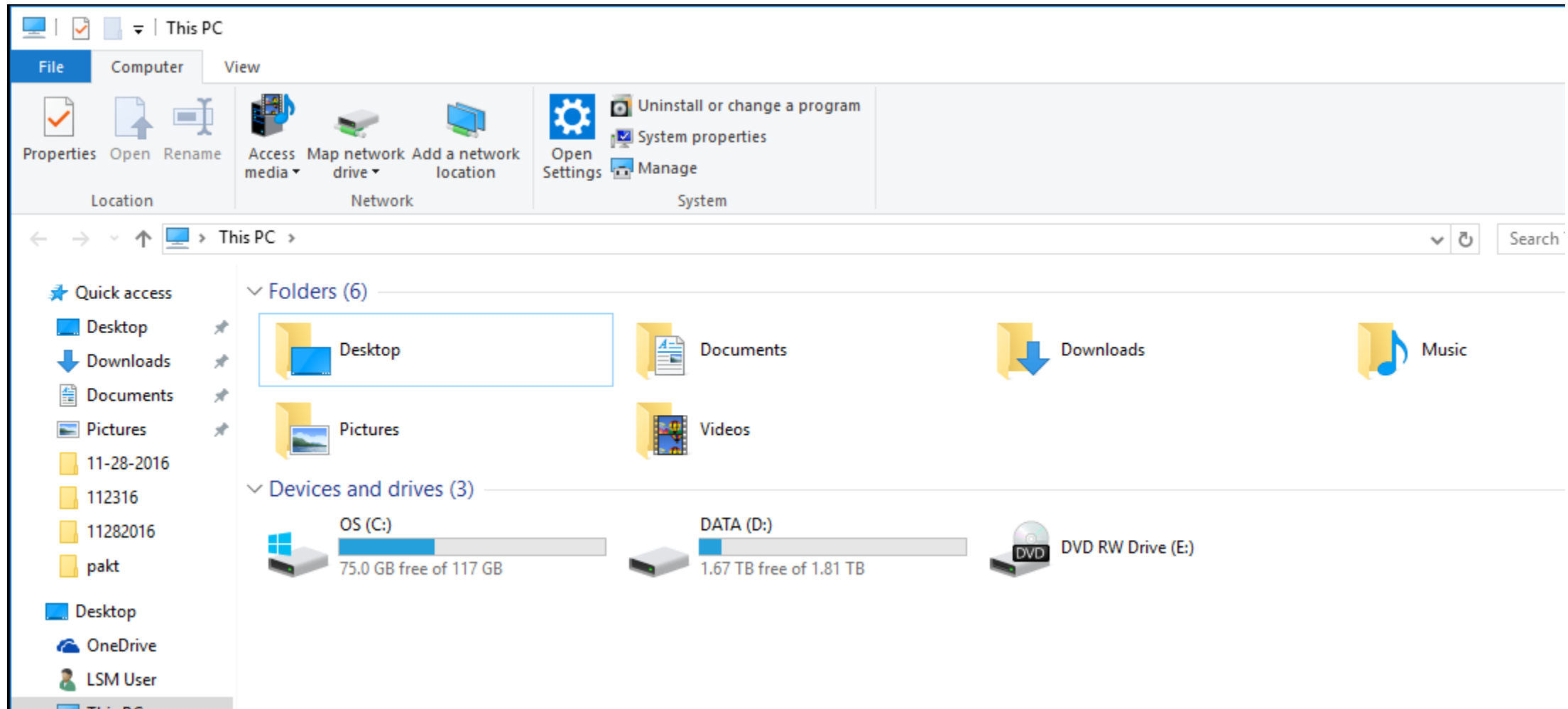


Accessing OMAL-SHARE1 server on the LSM710

Kim Peifley

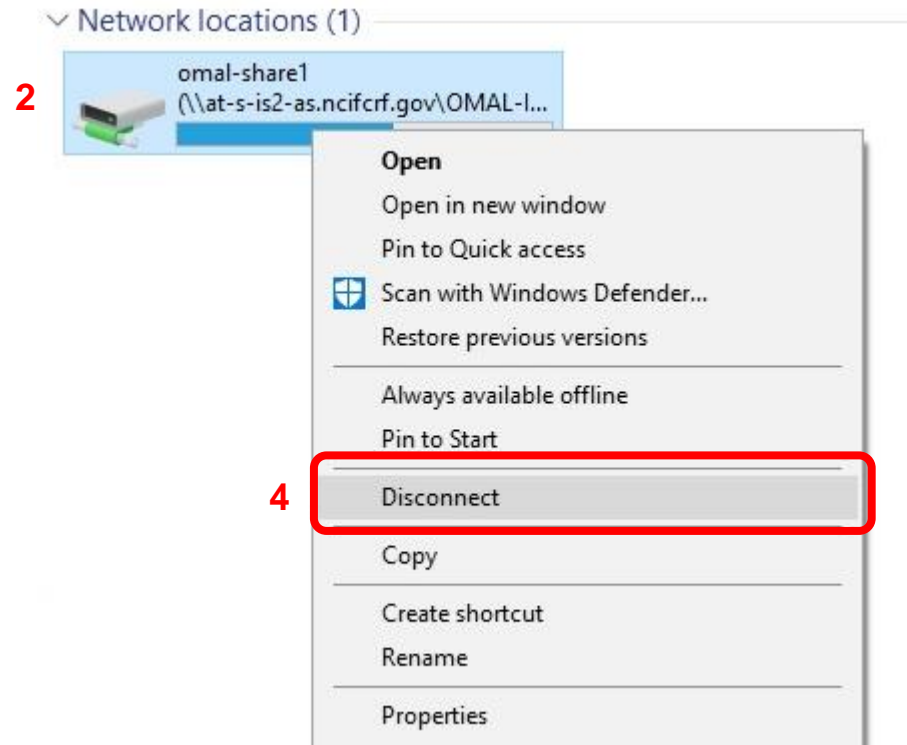
12/01/16

1. When you open My Computer you should not see the server as being connected.

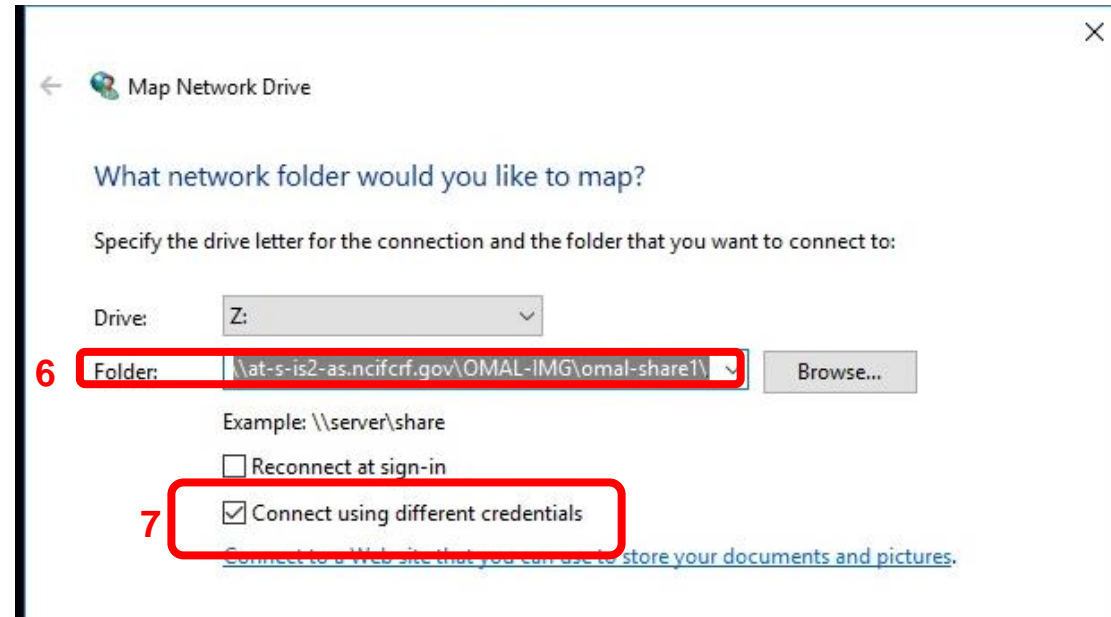
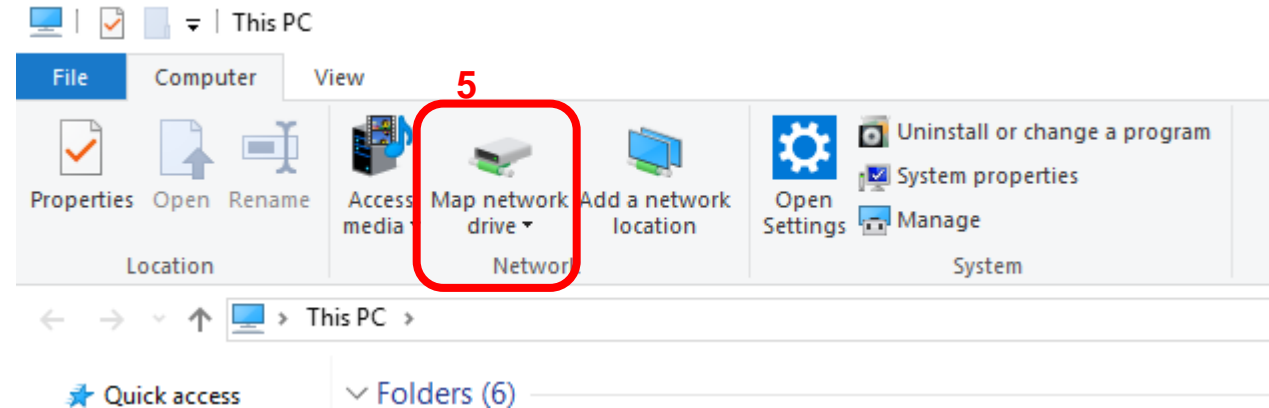


**Should you see a server mounted disconnect it.
This means someone else is logged in and you
will not be able to move your data.**

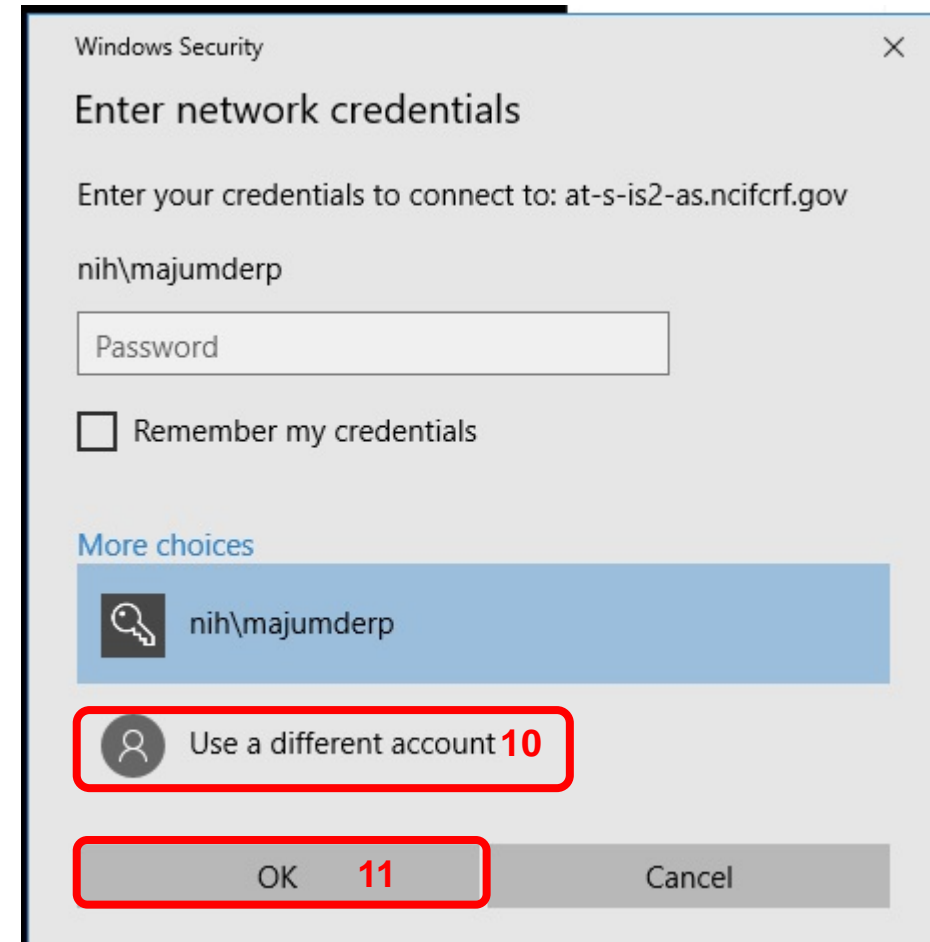
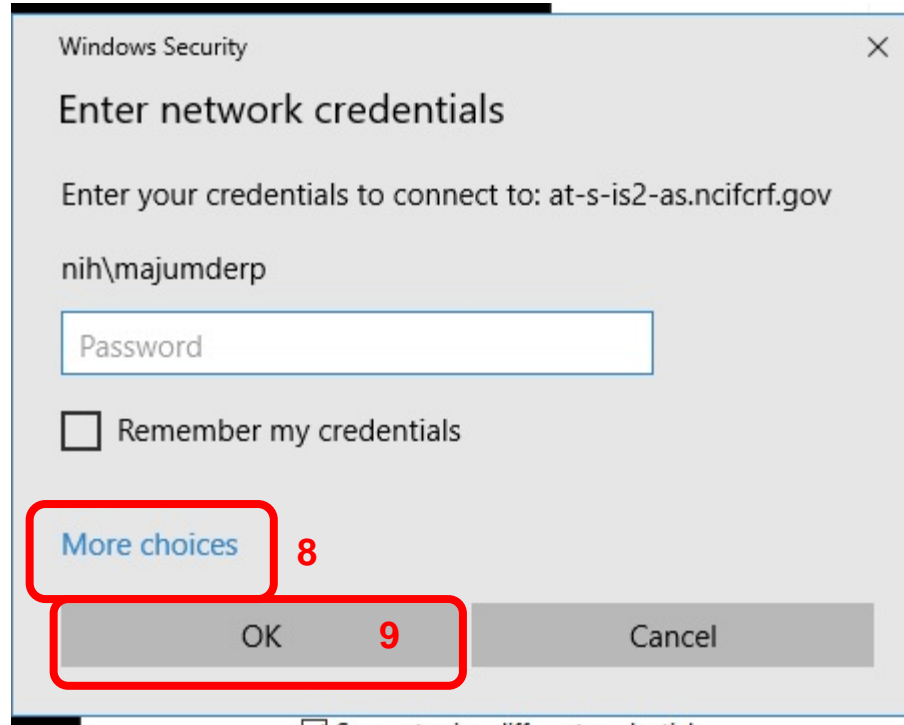
- 2. To do this highlight the server.**
- 3. Right clicking to get the menu.**
- 4. Select disconnect.**



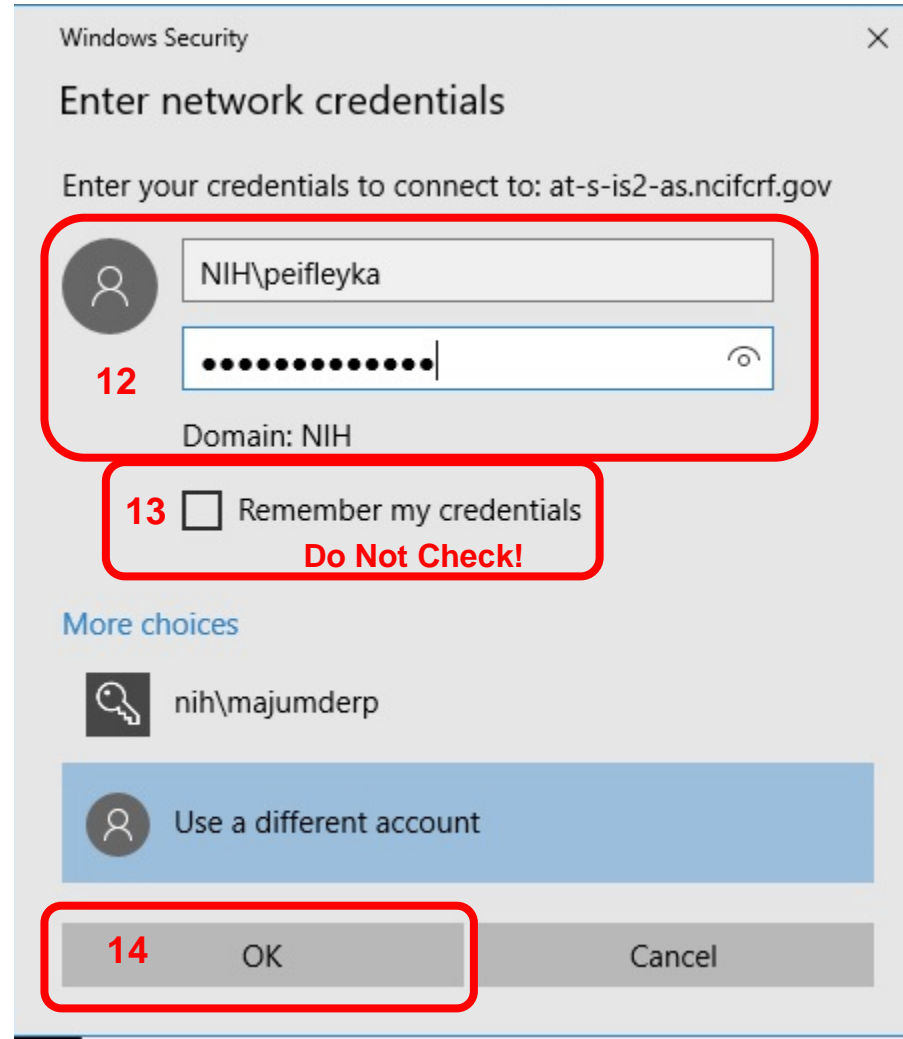
5. Click Map network drive.
6. Select server.
7. Check “Connect using different credentials.”



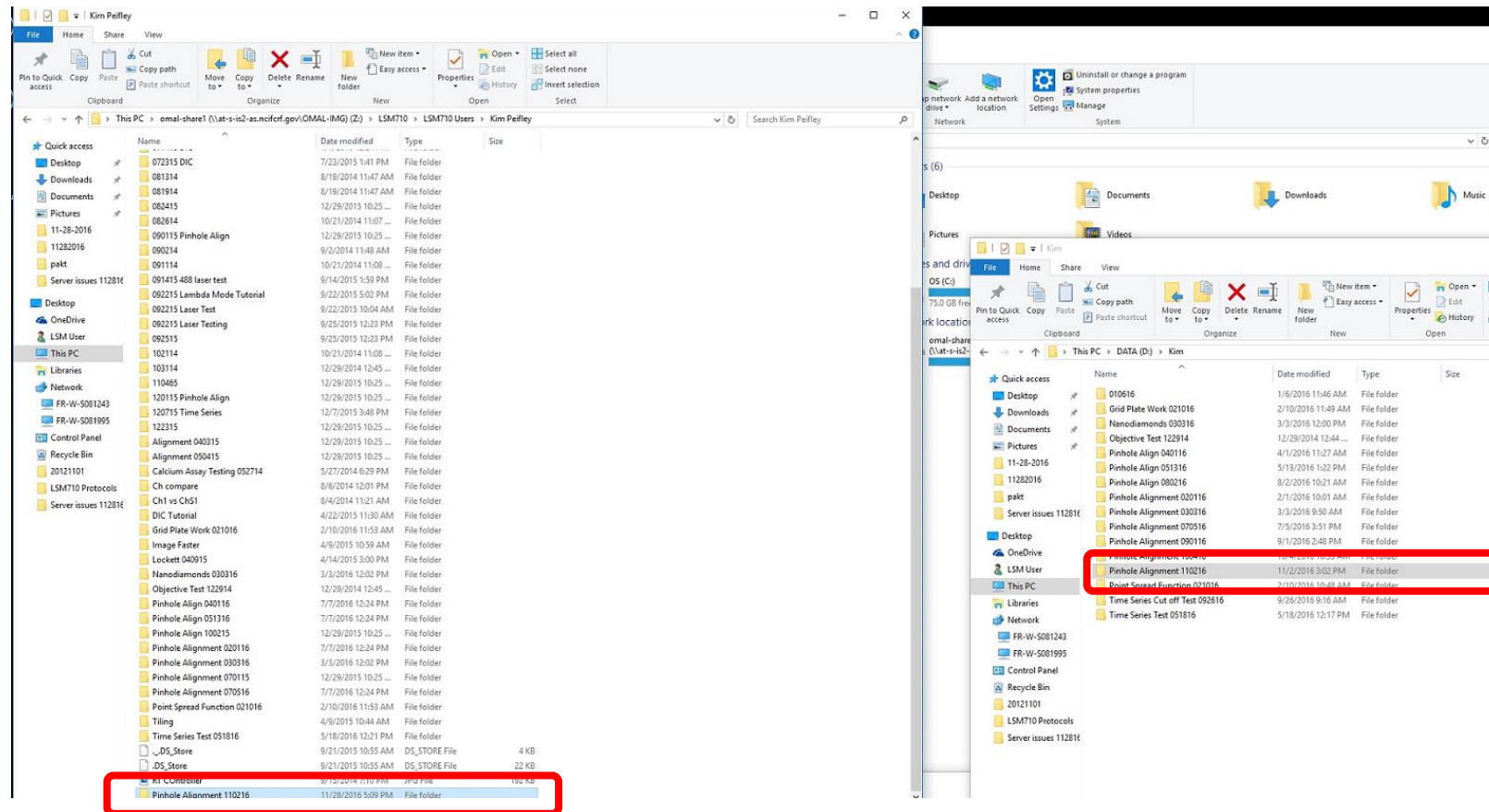
8. Click "More Choices".
9. Click OK.
10. Click "Use a different account".
11. Click OK.



12. Enter your NIH username and password. Remember to put NIH\ in front of your user name.
13. DO NOT check the box for “Remember my credentials!!
14. Click OK.



15. Transfer your data.



16. Disconnect your account.

