

**Post-processing of Images:
Maximum Intensity Projection,
Rotation and Cropping.
LSM710**

Kim Peifley

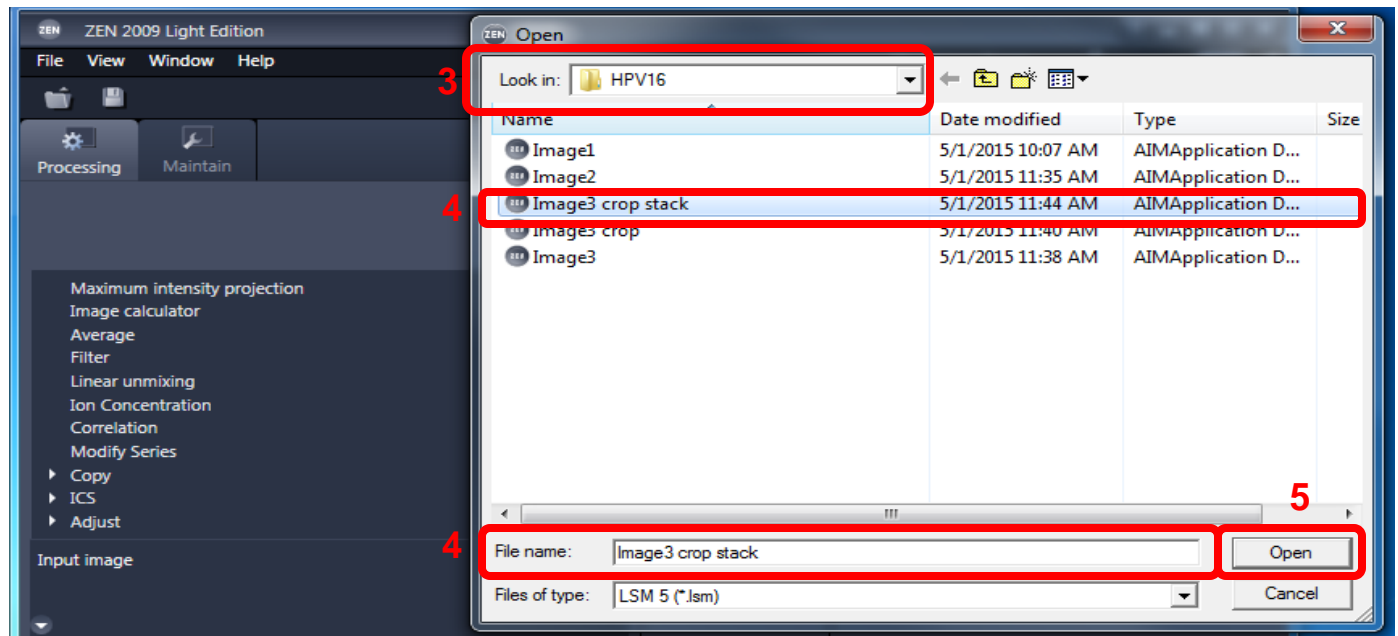
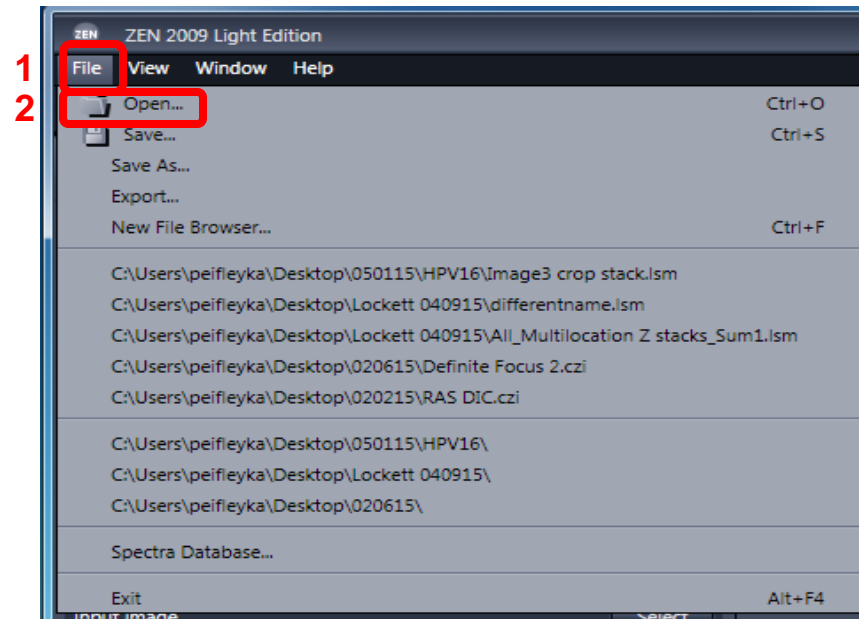
05/28/15

LSM710

ZEN2009 Software

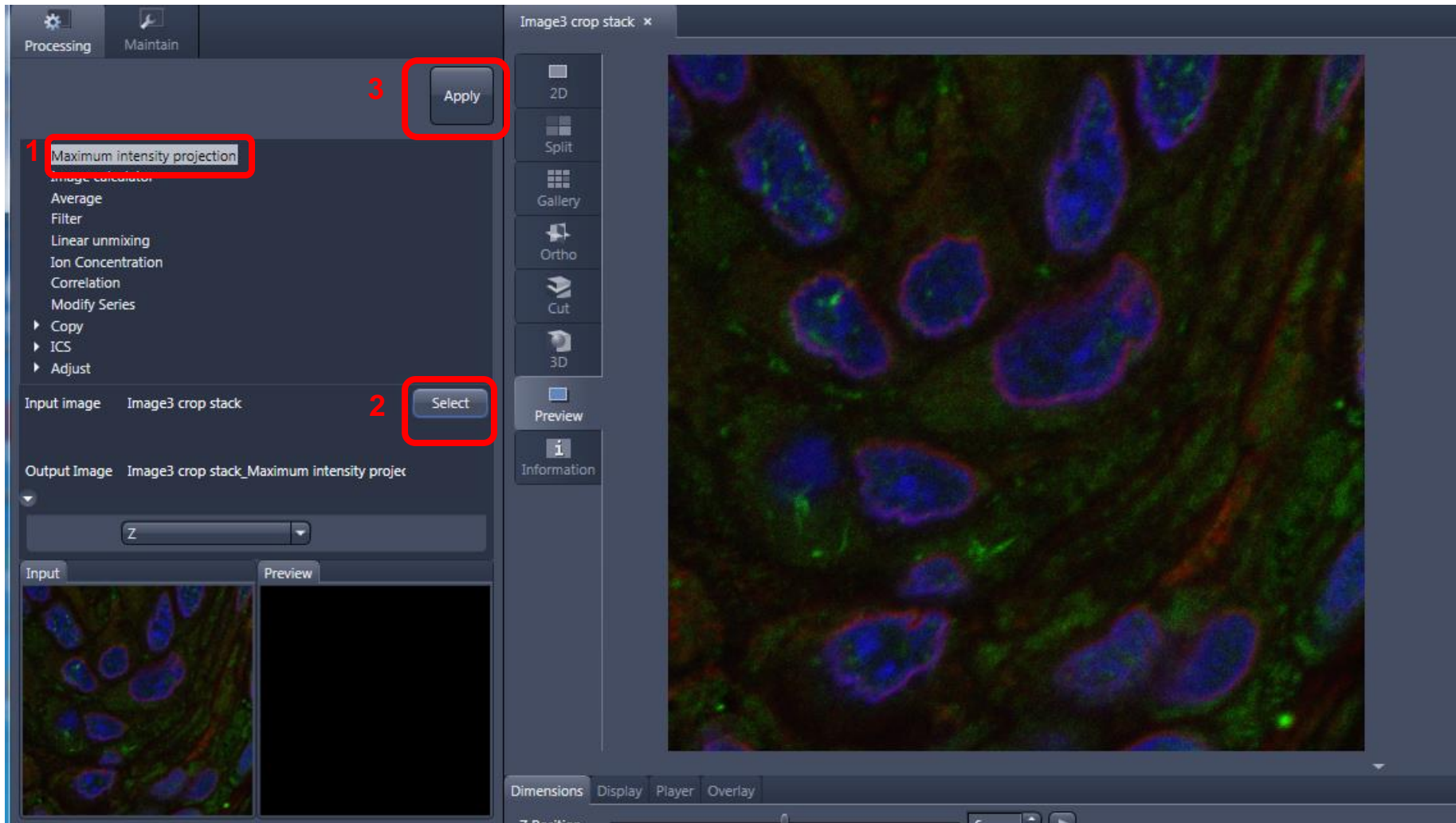
In ZEN2009 Software:

1. Click File.
2. Click Open.
3. Select Folder.
4. Select Image.
5. Click Open.

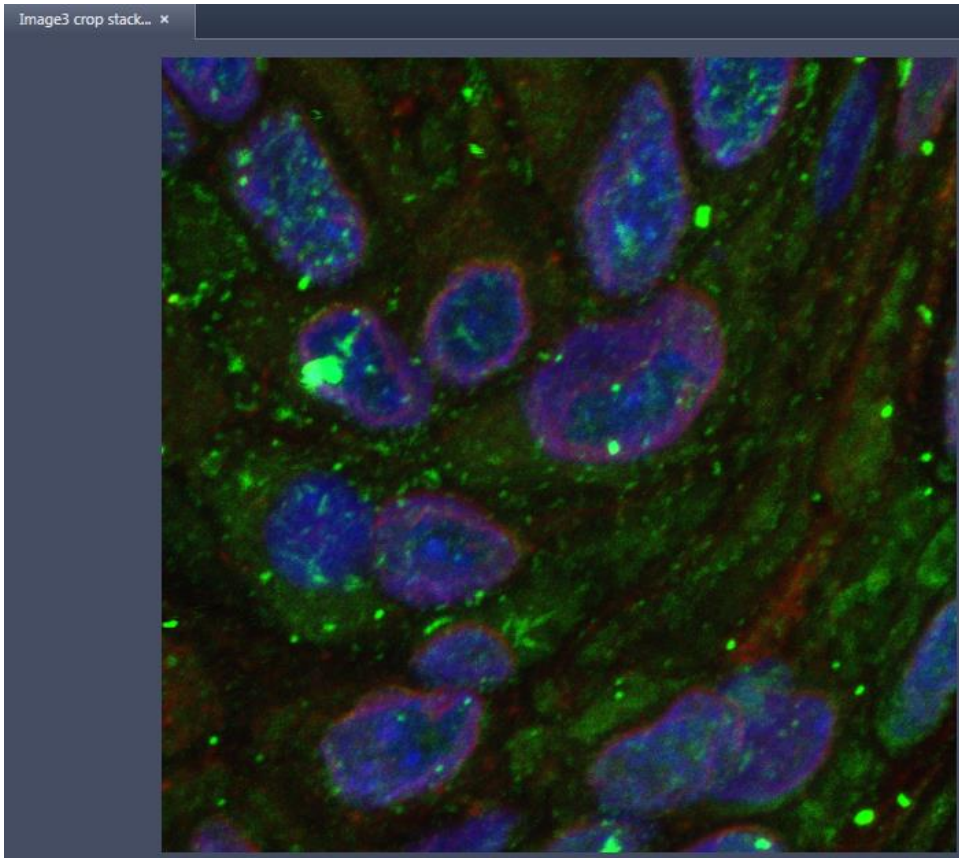


For Maximum Intensity Projection:

1. Click Maximum intensity projection.
2. Click Select to select the input image you wish to use.
3. Click Apply.

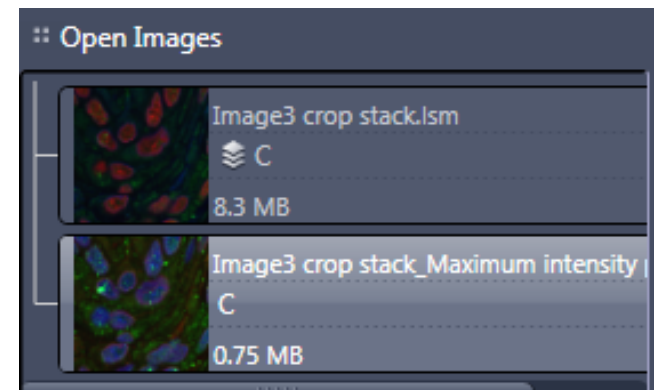


This is your final image



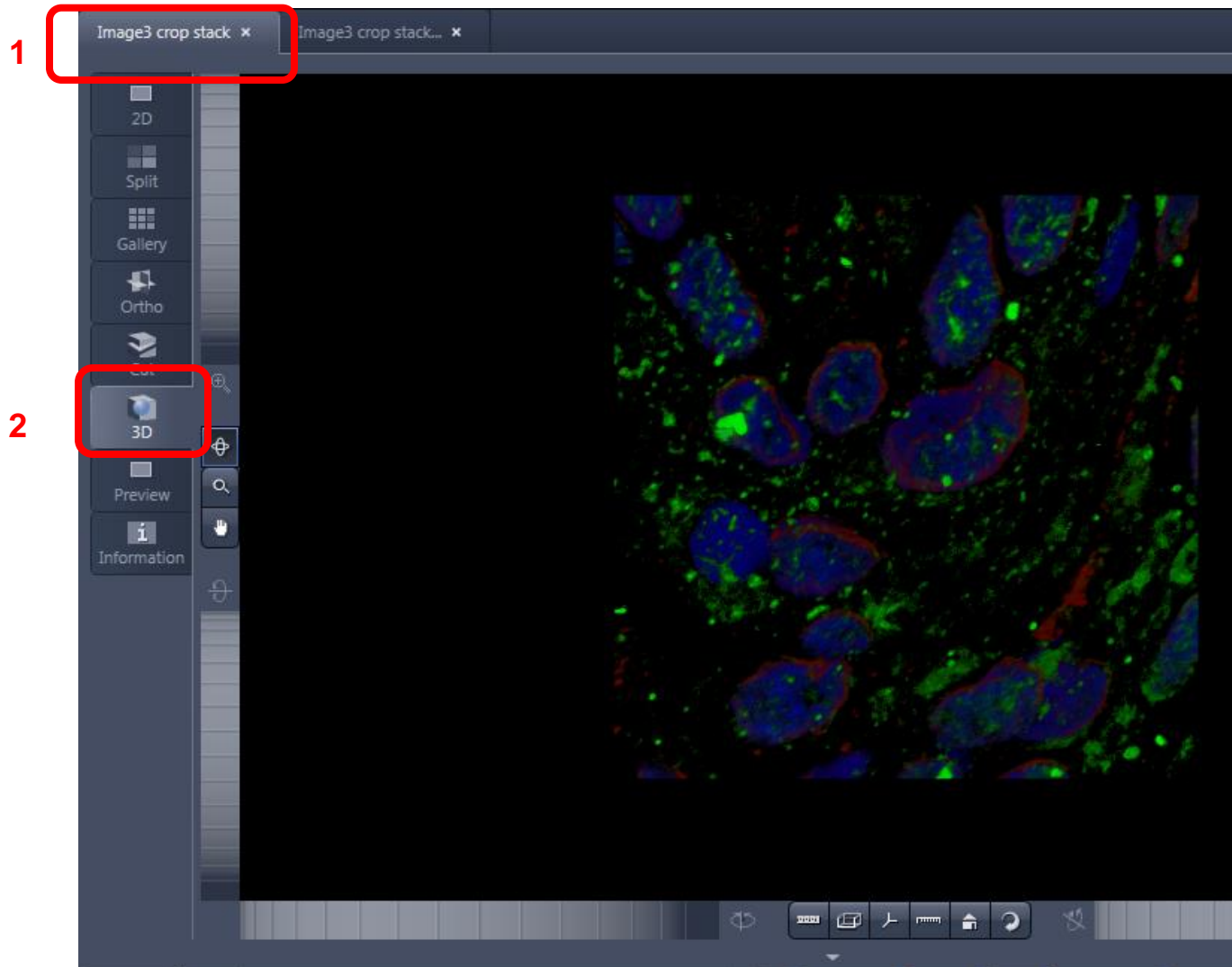
Notice in the Open Images section it adds “_Maximum intensity projection” to the name of the file.

You must remember to save this file. Though named it is not saved automatically.



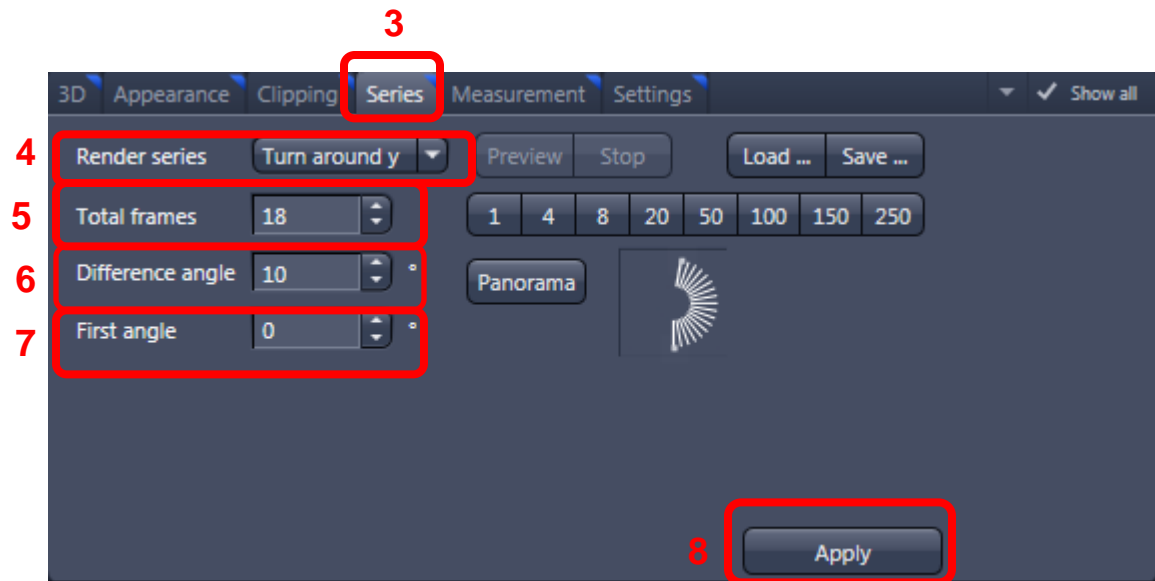
To get a rotating image:

1. Make sure you are on original Z stack image.
2. Click the 3D box.

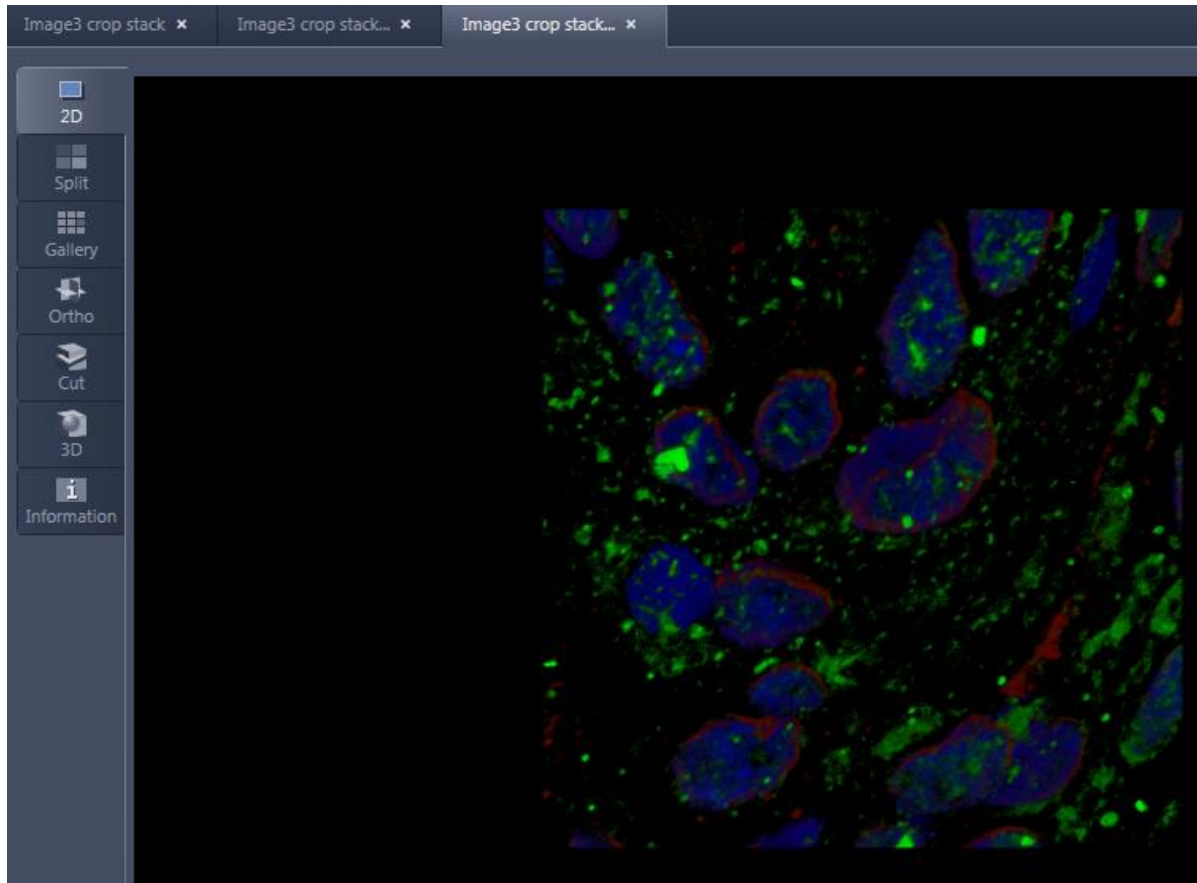


Note: Should your image not appear as you wish follow the instructions at the end of this section to change the background.

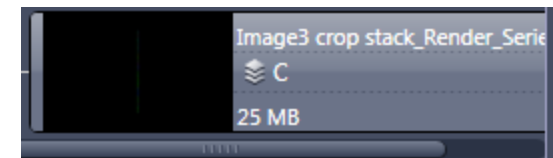
3. Click on the Series tab.
4. Select Render Series. In this case Turn around y so image turns on y axis.
5. Select number of total frames. If you wish to rotate 180 degrees, make this 18.
6. Select difference angle. Since we selected 18 for total frames and want to rotate 180 degrees we make Difference angle 10.
7. First angle should be zero.
8. Click apply.



This is the final image



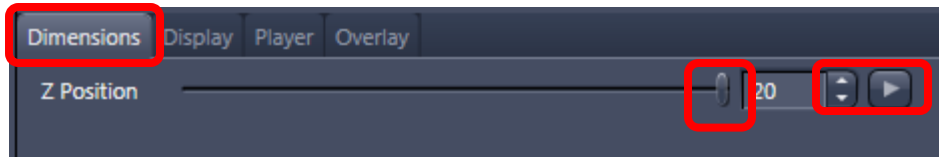
Notice in the Open Images section it adds “_Render_Serie” to the name of the file. You must remember to save this file. Though named it is not saved automatically.



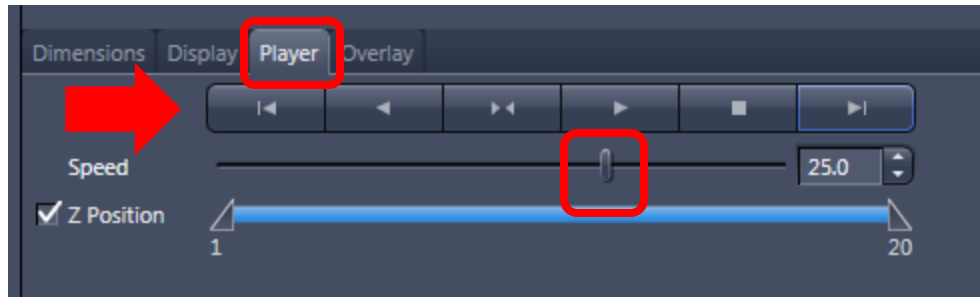
You can view the rotating image in 2 ways:

1. In the Dimensions tab. The up and down arrow to manually rotate it or the forward arrow to have it done automatically. You can also use the slider.
2. In the Player tab. Use the buttons to control on/off etc. The slider can be controlled the same way as in the Dimensions tab for Z Position.

1

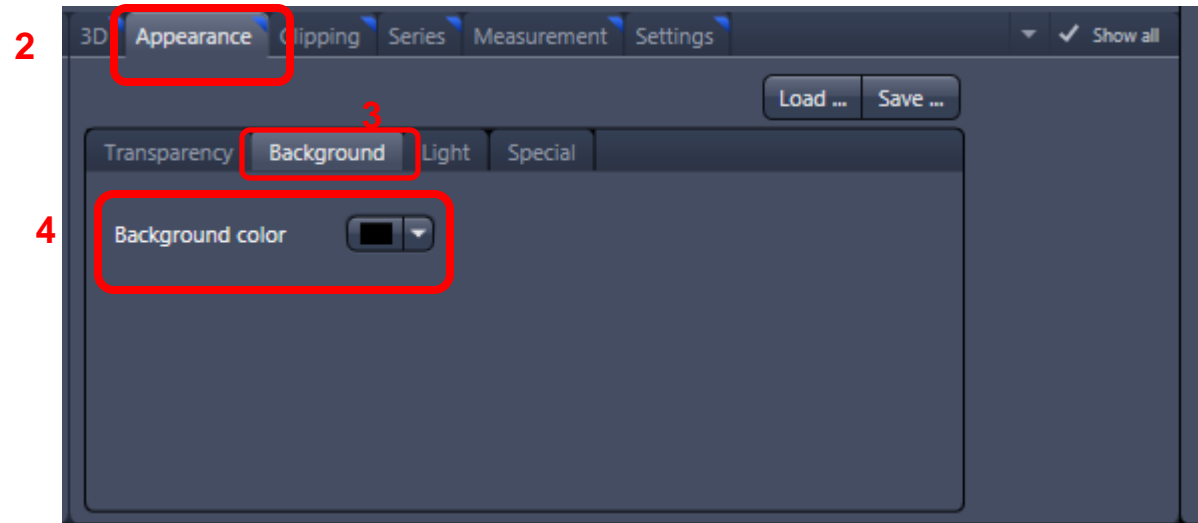
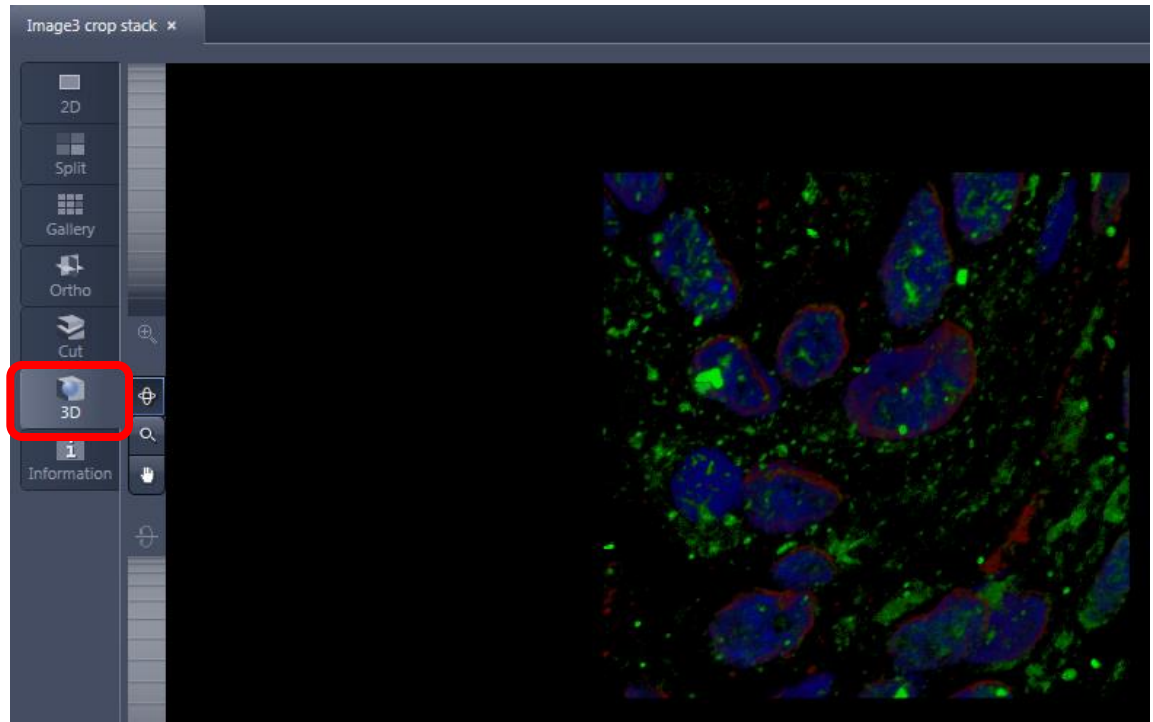


2



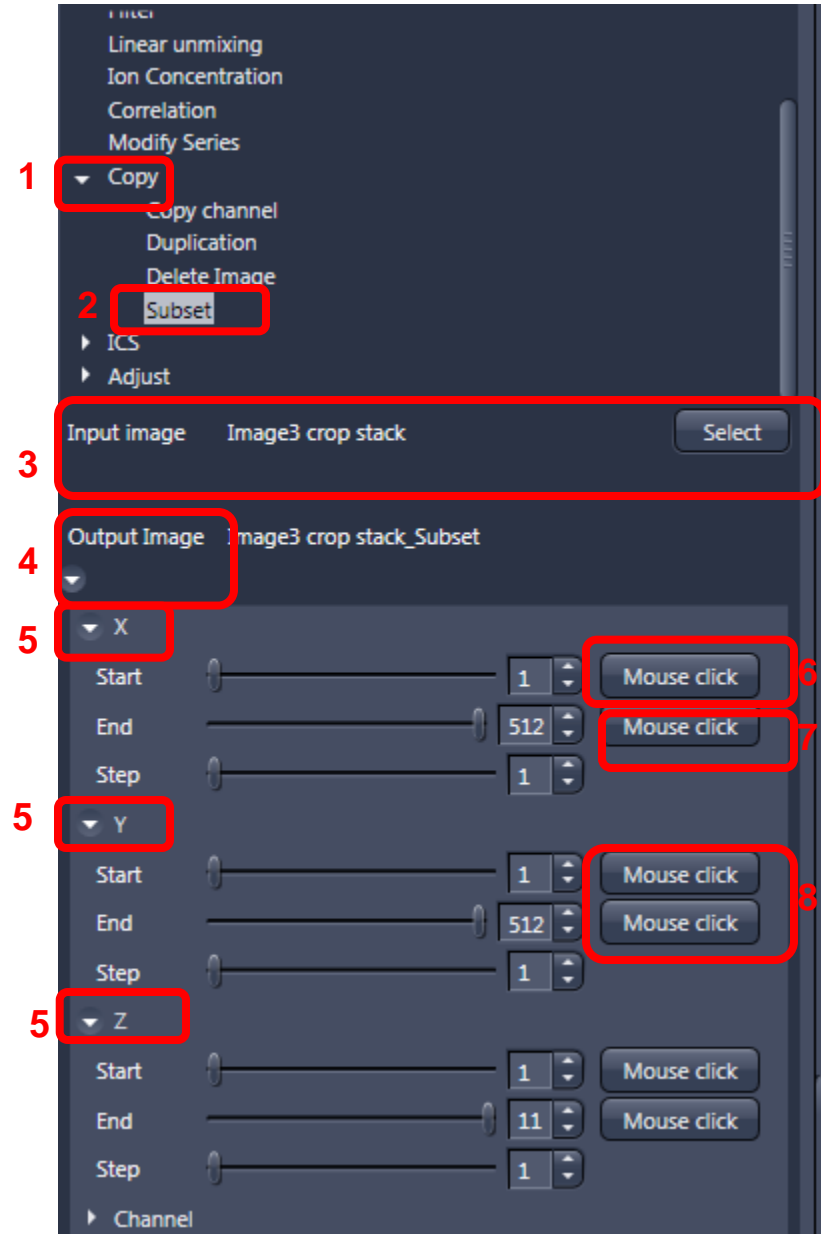
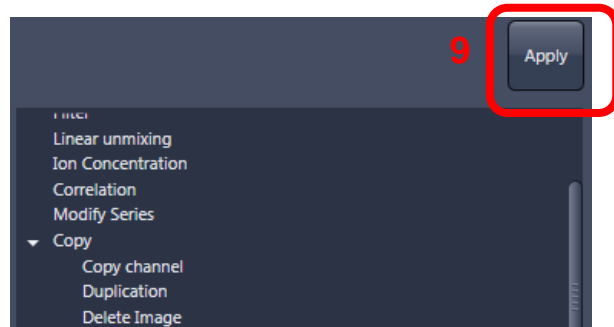
Note: Should your image not appear as you think it should [example not a black background] perform the following steps.

- 1. Click 3D Tab.**
- 2. Click Appearance Tab.**
- 3. Click Background Tab.**
- 4. Change Background color to black.**



Cropping image:

1. In the Processing Tab click the arrow next to Copy to toggle the menu.
2. Click Subset.
3. Select Input Image.
4. Click the arrow under Output Image to toggle open the crop menu.
5. Click the arrows next to X, Y, and Z as necessary to open up the menus.
6. To crop in X direction click Mouse click for Start then click on the image where you wish to start the crop.
7. Repeat this for End.
8. Repeat steps 5 and 6 for the Y direction
9. Click Apply.



Result: On the left is the original image and the right is the cropped image.

