

# **Post-processing of Images: Maximum Intensity Projection, Rotation and Cropping.**

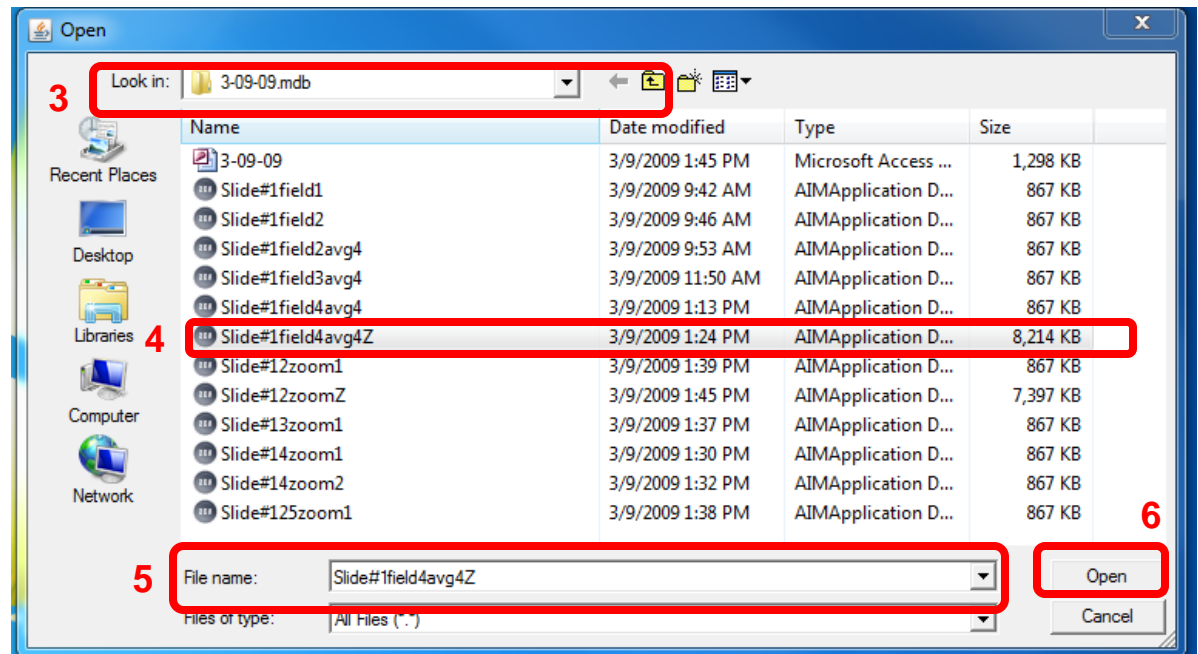
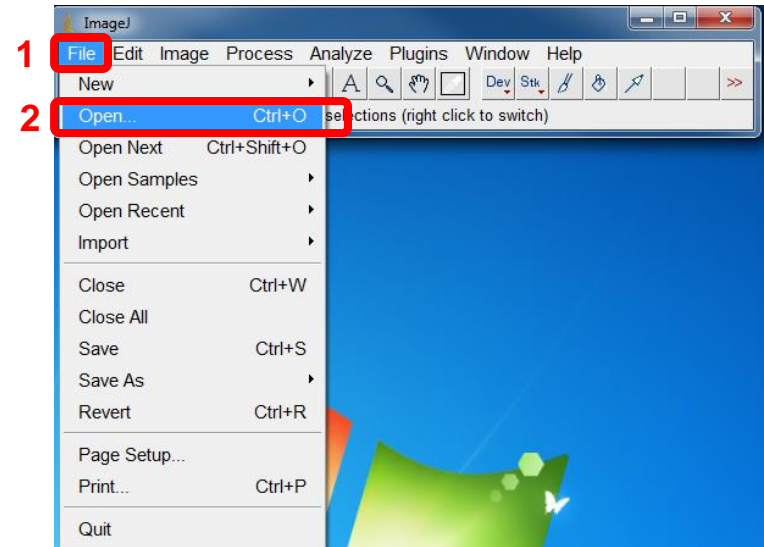
Kim Peifley

05/28/15

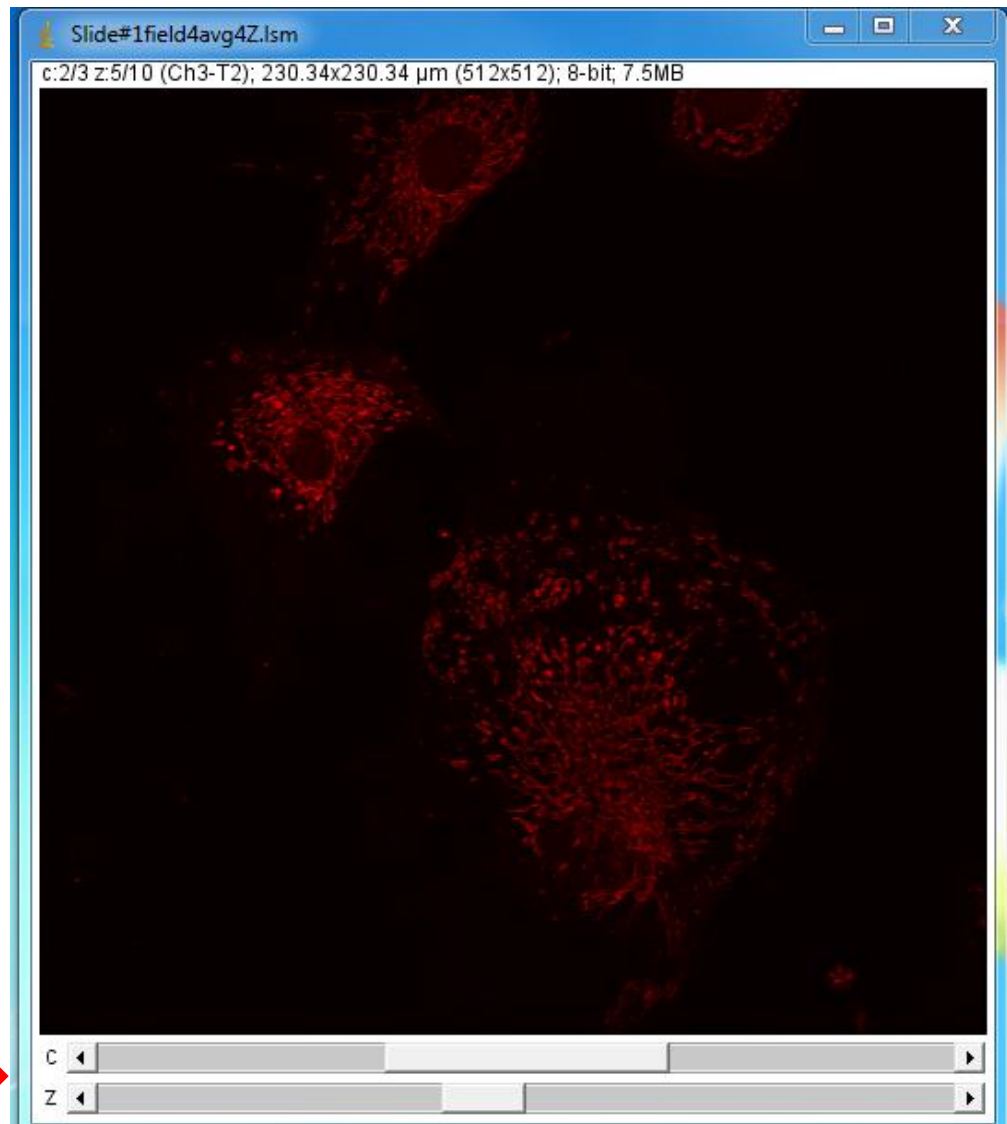
**Image J**

## In ImageJ software:

1. Click File.
2. Click Open.
3. Look in: box - Find folder you wish to open.
4. Highlight image you wish to open.
5. File name: - make sure file name you highlighted is shown here.
6. Click Open.

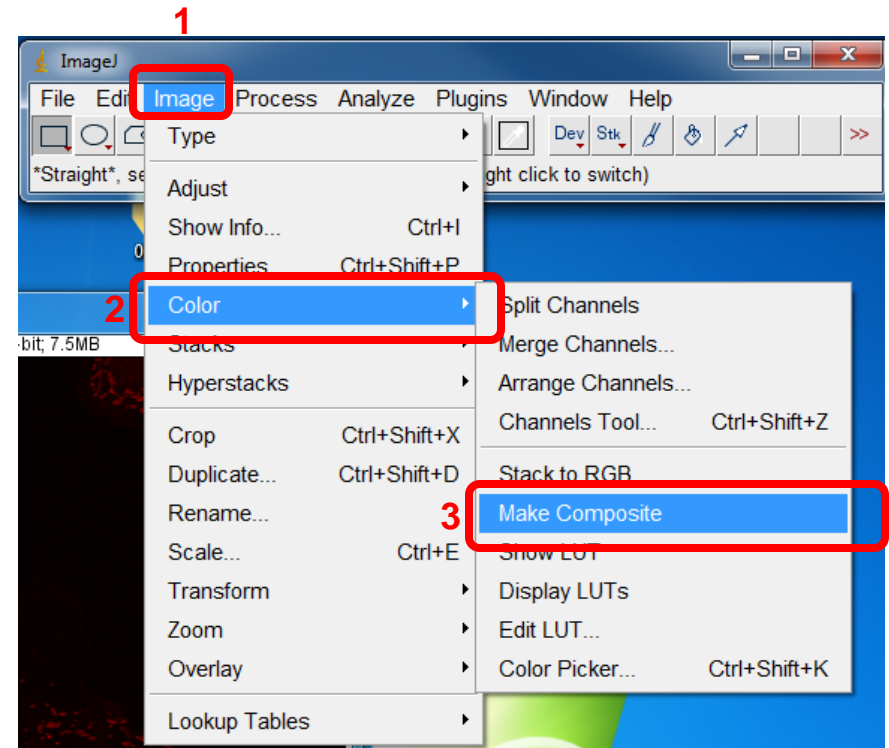
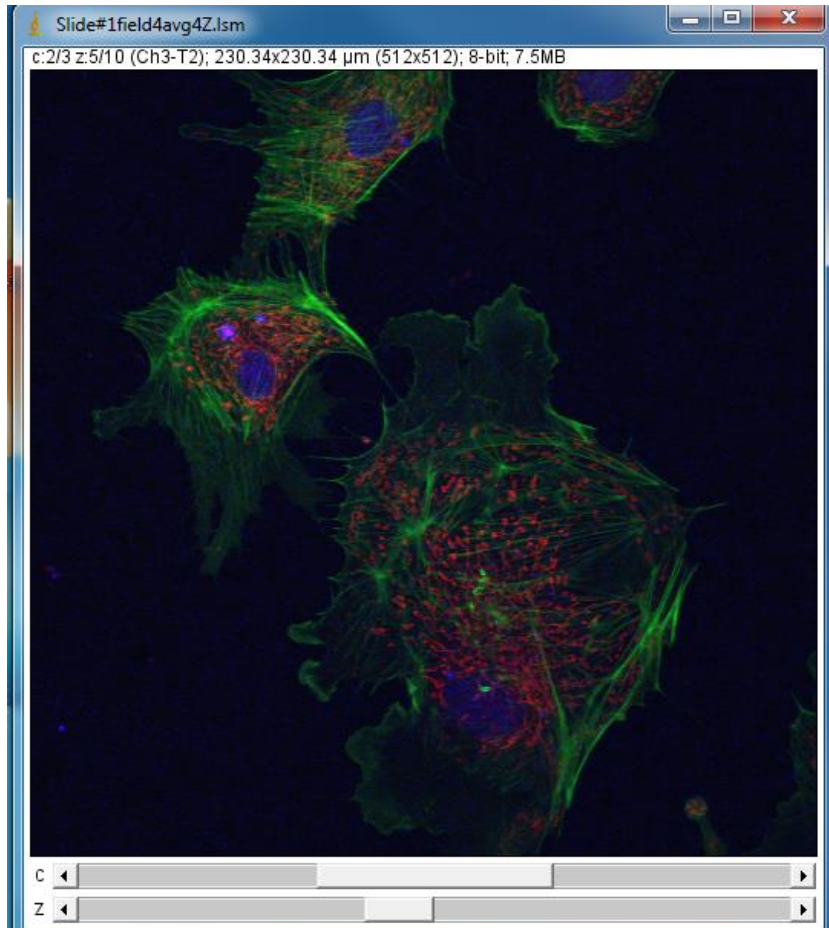


**You will notice that your image opens up in single color and single slice view. In this current view you move the sliders at the bottom of the photo to move through the colors [C] and slice [Z].**



### To Merge Channels:

1. Click Image.
2. Click Color.
3. Click Make Composite.

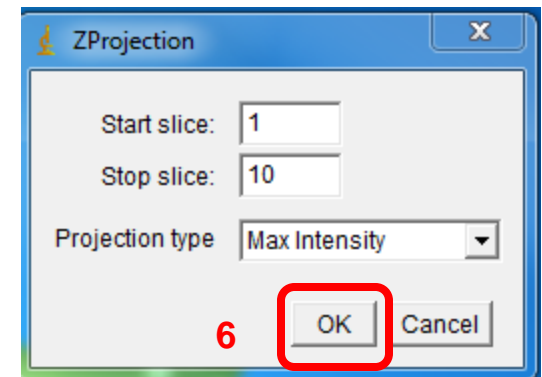
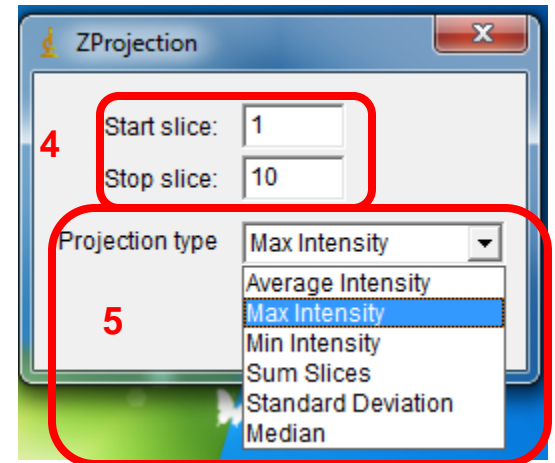
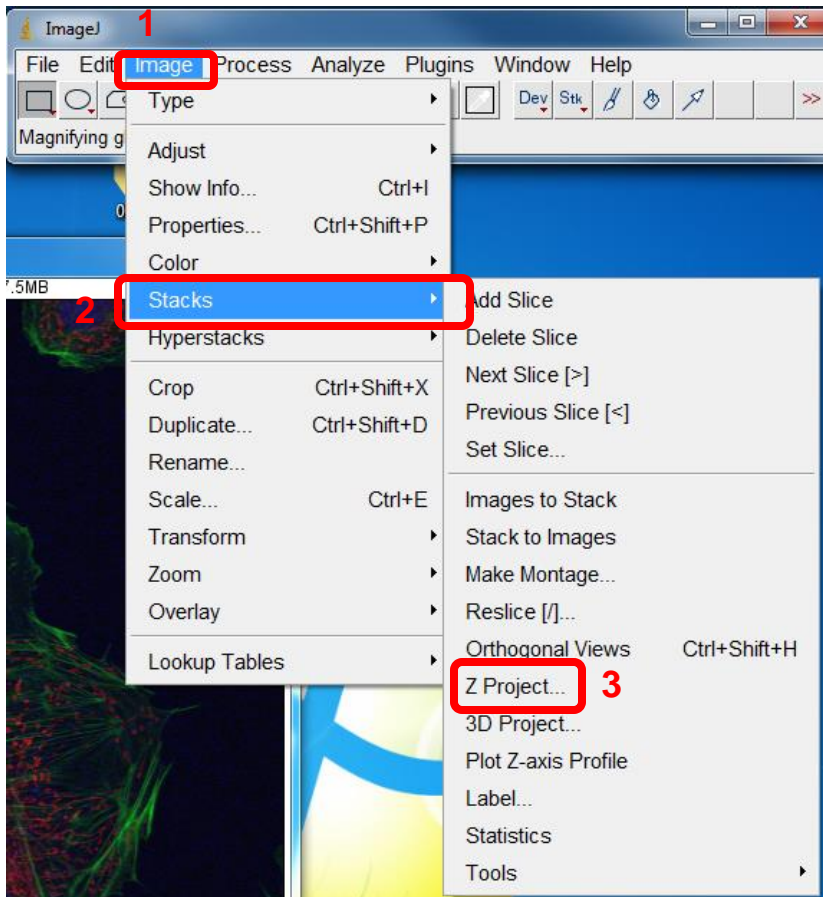


This is your composite image. You can still move through the Z stack by moving the Z slider.

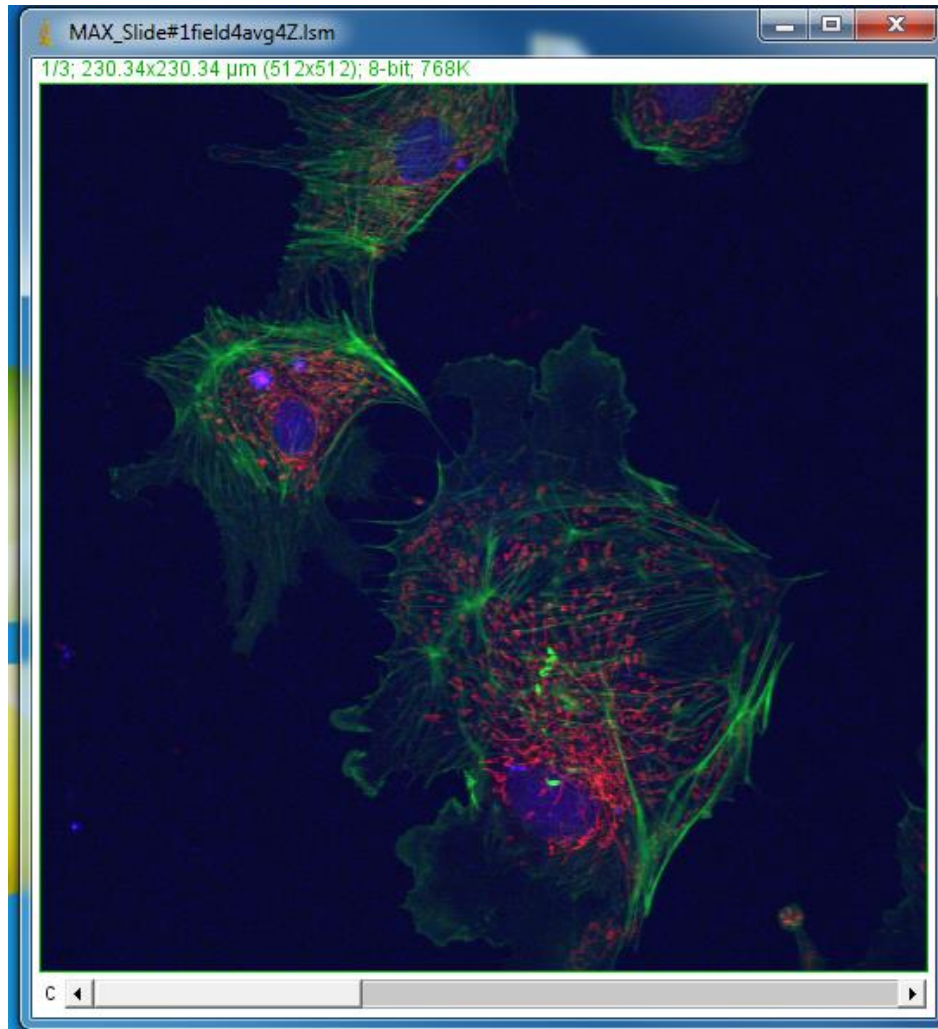
## For Maximum Intensity Projection:

1. Click Image.
2. Click Stacks.
3. Click Z Project....

4. Select which slice you wish to start and stop.
5. For Projection Type Select Max Intensity.
6. Click Ok.



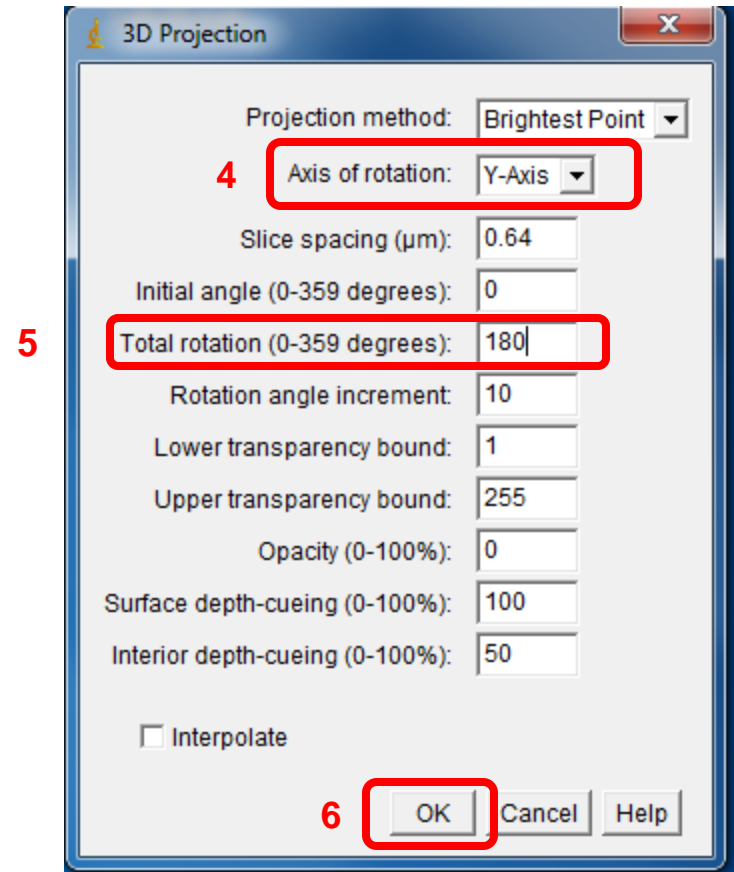
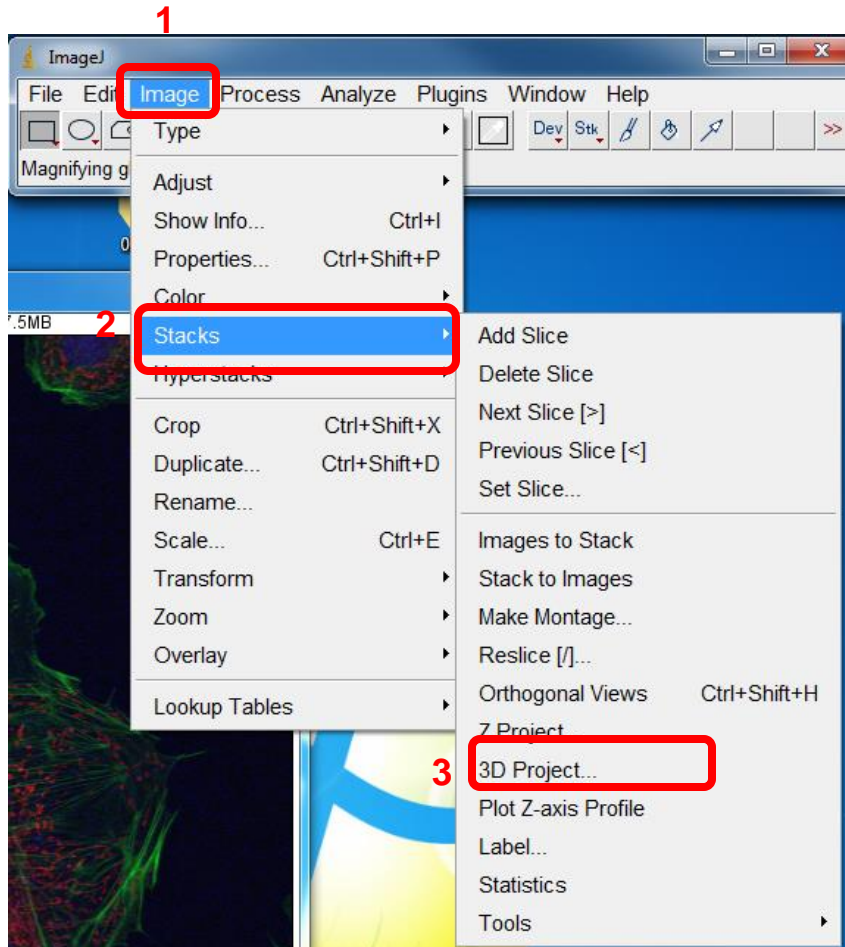
**This is the maximum intensity projection image**



## For Turning Image:

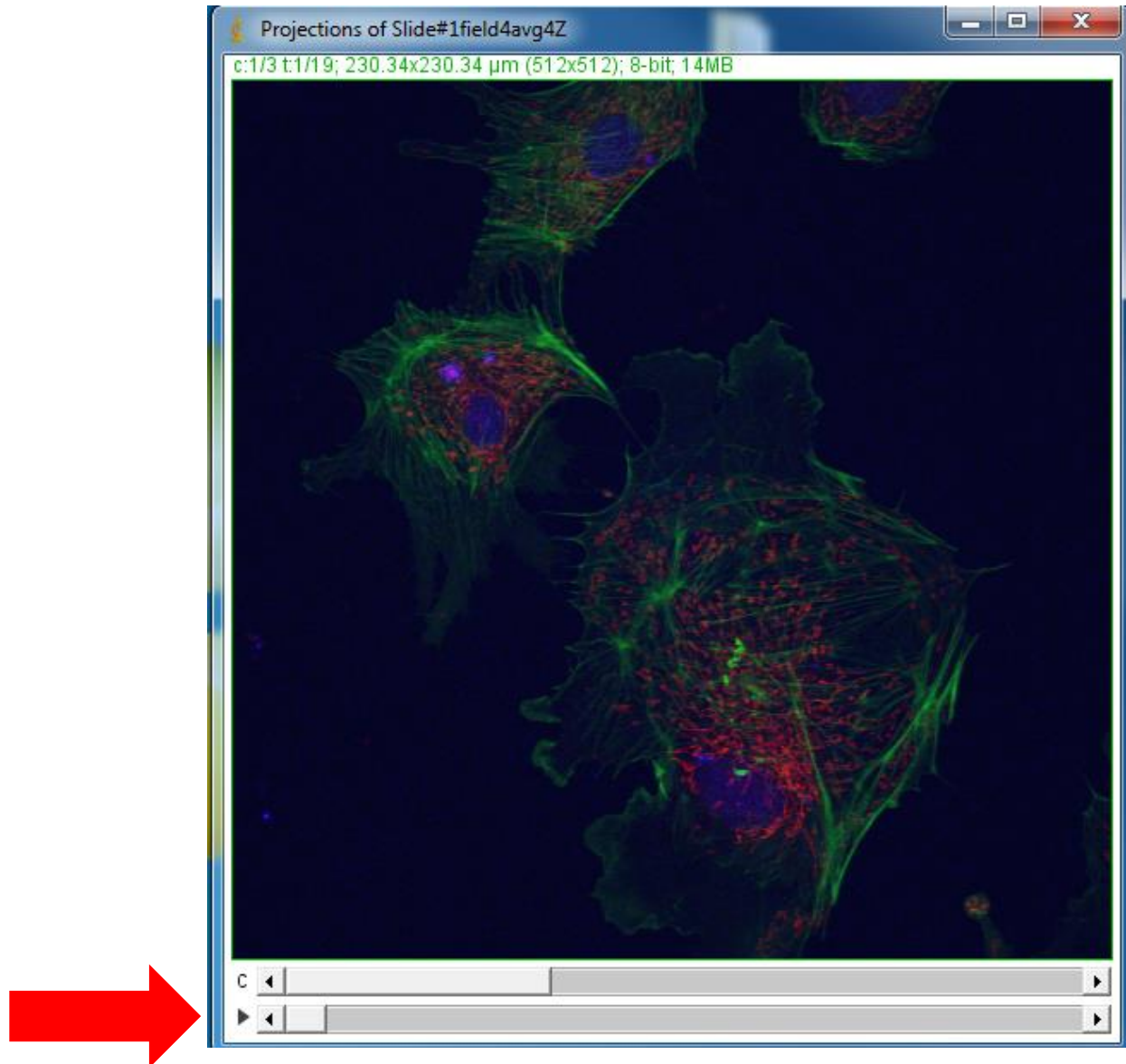
With original image selected:

1. Click Image.
2. Click Stacks.
3. Click 3D Project....
4. Select Axis of Rotation as Y-Axis.
5. Select Total rotation as 180.
6. Click Ok.



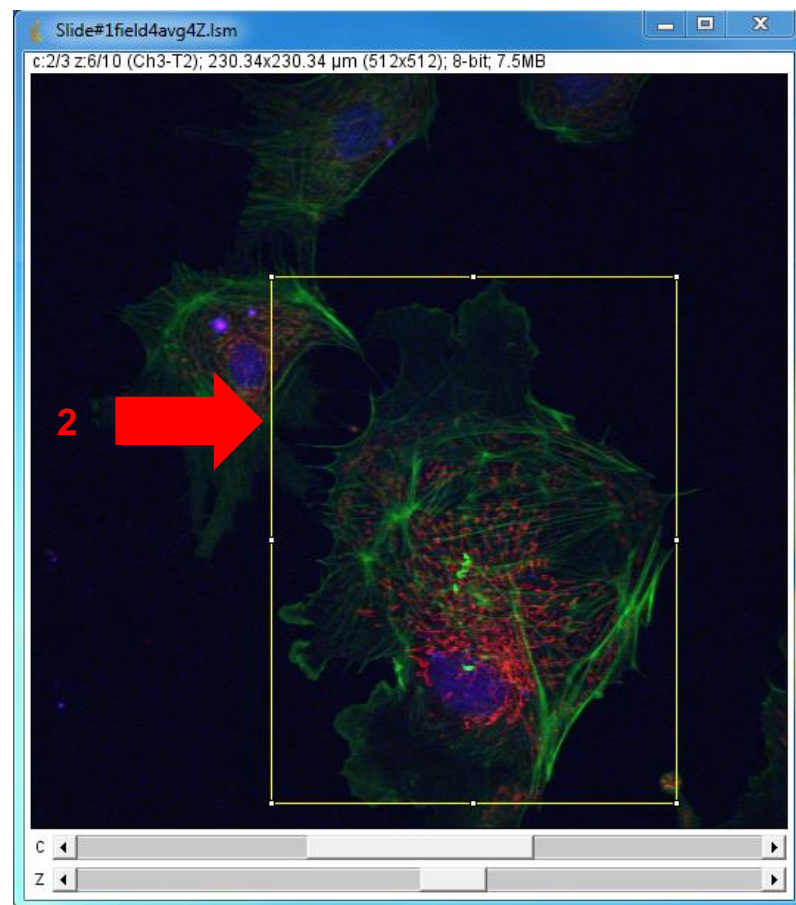
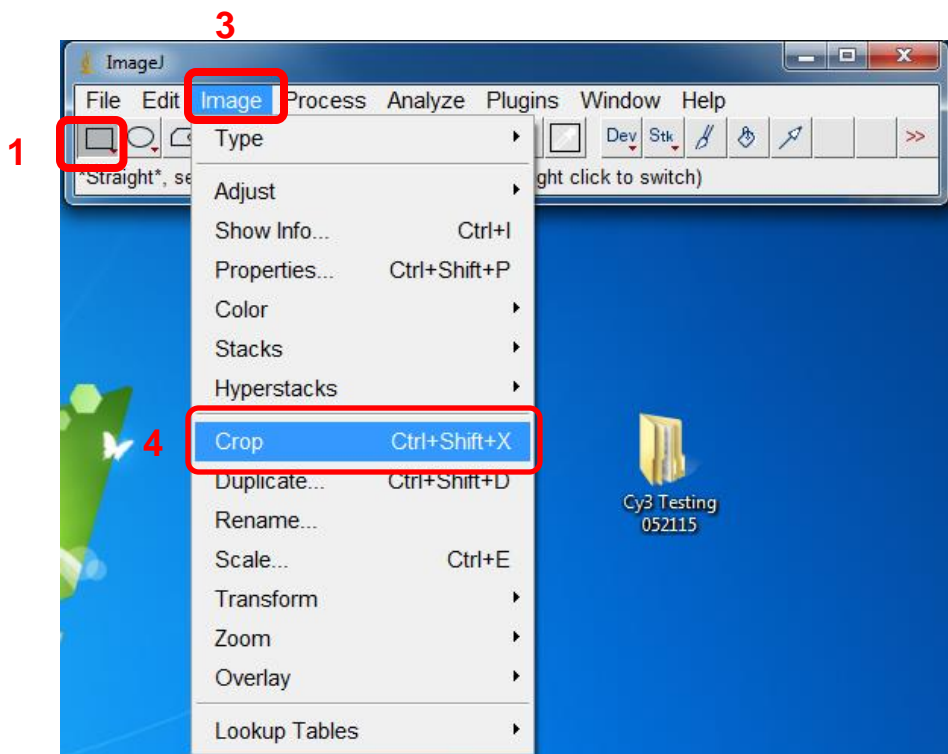


This is your rotating image. You click the arrow to move the rotation.

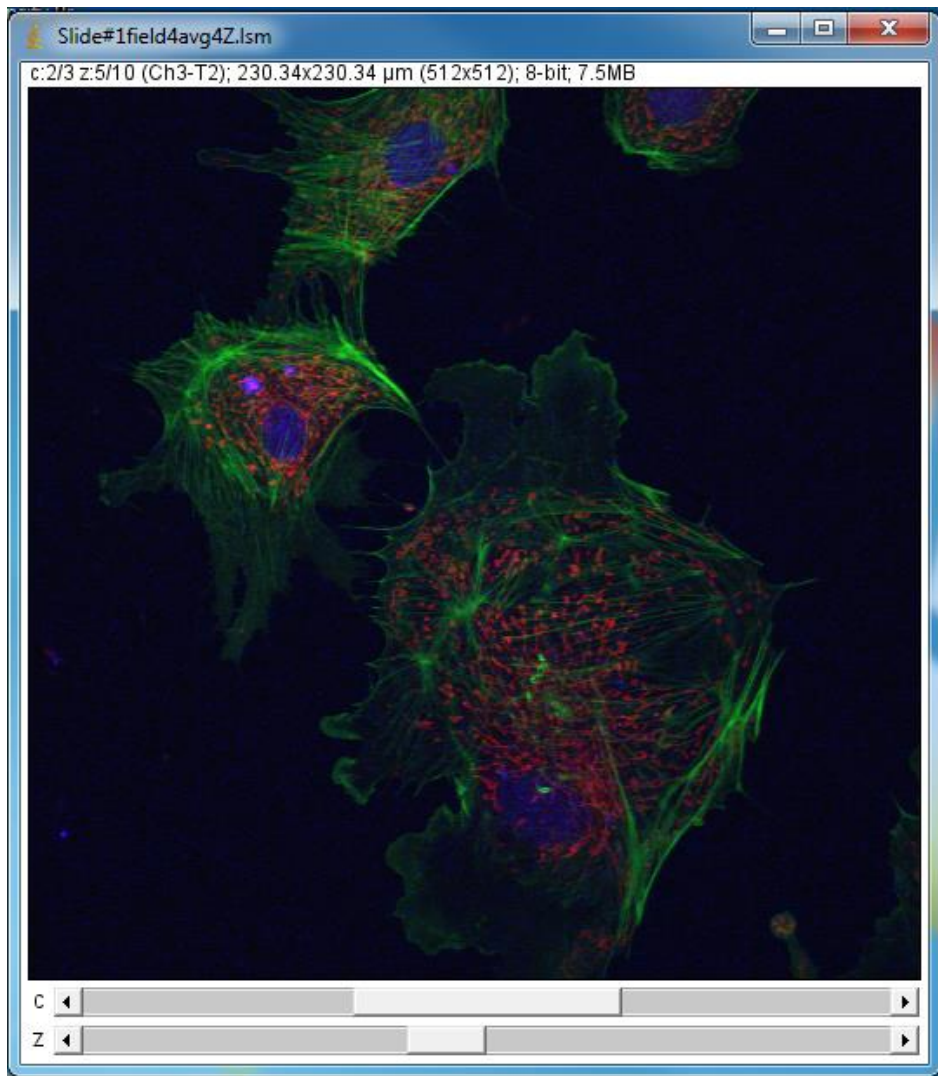


## To Crop Image:

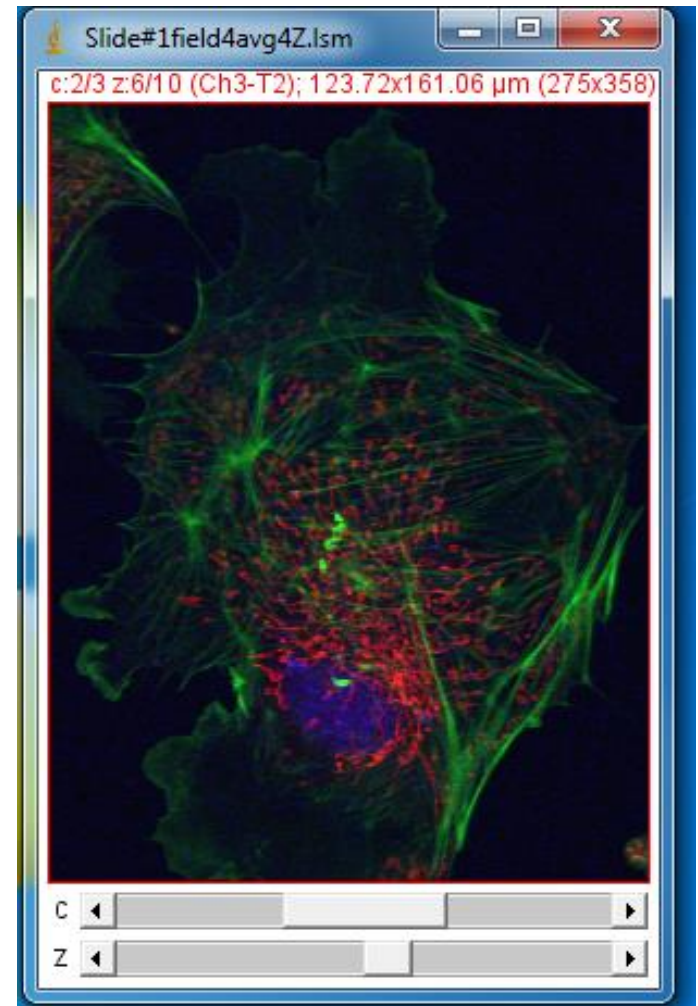
1. Click the box icon.
2. Draw the area on the image you wish to crop.
3. Click Image.
4. Click Crop.



Original Image



Crop Image



**Fiji**

**Fiji and ImageJ are almost identical programs. Fiji has some features that ImageJ does not. Therefore you can follow the ImageJ instructions when you are in Fiji**

**Note: Images acquired on the LSM780 are in .czi file format. ImageJ cannot recognize this file format but Fiji will recognize it.**